

# \$714,900 - 39 Memorial Parkway, Rural Red Deer County

---

MLS® #A2247950

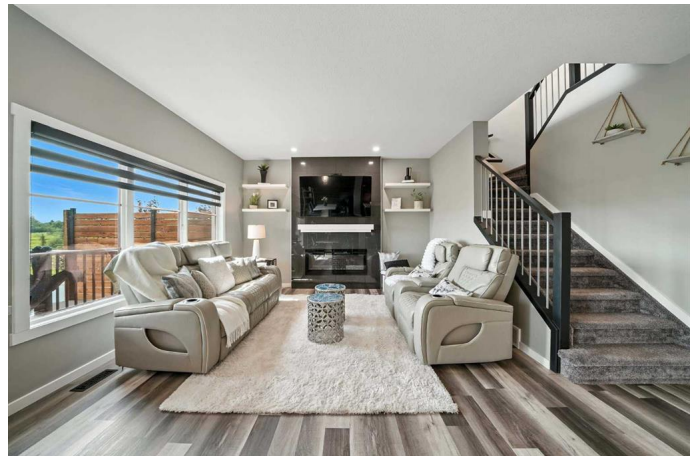
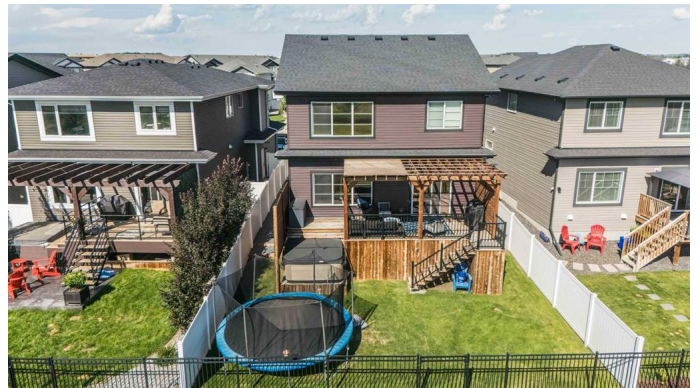
**\$714,900**

4 Bedroom, 4.00 Bathroom, 2,080 sqft  
Residential on 0.09 Acres

Liberty Landing, Rural Red Deer County,  
Alberta

Visit REALTOR® website for additional  
information.

This exceptional custom-built residence with A/C showcases over \$100,000 in premium upgrades and an unparalleled attention to detail. The heated double attached garage—finished with epoxy flooring—doubles as a refined man cave or extra storage, while the home's prime location backs directly onto tranquil green space. In sought-after Liberty Landing, Red Deer County —close to everything you need and enjoying the advantage of lower taxes. Step inside to a bright, open-concept main level where expansive windows frame beautiful views. The living room, anchored by a stylish fireplace, flows seamlessly into the chef-inspired kitchen featuring a large island with breakfast bar, gleaming quartz countertops, upgraded tile backsplash, walk-in pantry, and an elegant dining area with glass doors opening to the deck for enjoying the outdoors. The main level also has a mudroom and 2 pc bath for convenience. Upstairs, a versatile loft connects to 3 bedrooms and 2 full baths, including the luxurious primary suite with walk-in closet and spa-inspired 5-piece ensuite. The convenience of an upper-level laundry adds to the thoughtful design. The fully finished lower level offers a spacious recreation room with a fireplace, a dedicated



home gym, and a fourth bedroomâ€”perfect for guests or extended family. Outside, the partially covered deck invites year-round relaxation while capturing the stunning, uninterrupted views of the surrounding green space. This home seamlessly blends refined design, modern comfort, and a coveted locationâ€”offering an extraordinary lifestyle

Built in 2019

**Essential Information**

MLS® #	A2247950
Price	\$714,900
Bedrooms	4
Bathrooms	4.00
Full Baths	3
Half Baths	1
Square Footage	2,080
Acres	0.09
Year Built	2019
Type	Residential
Sub-Type	Detached
Style	2 Storey
Status	Active

**Community Information**

Address	39 Memorial Parkway
Subdivision	Liberty Landing
City	Rural Red Deer County
County	Red Deer County
Province	Alberta
Postal Code	T4E 3B7

**Amenities**

Parking Spaces	4
Parking	Double Garage Attached, Front Drive, Heated Garage
# of Garages	2

**Interior**

Interior Features	Breakfast Bar, Closet Organizers, Double Vanity, Kitchen Island, No Smoking Home, Open Floorplan, Pantry, Quartz Counters, Recessed Lighting, Soaking Tub, Sump Pump(s), Walk-In Closet(s)
Appliances	Dishwasher, Electric Range, Microwave Hood Fan, Refrigerator, Washer/Dryer, Water Softener, Window Coverings
Heating	Fireplace(s), Forced Air
Cooling	Central Air
Fireplace	Yes
# of Fireplaces	2
Fireplaces	Electric
Has Basement	Yes
Basement	Finished, Full

## Exterior

Exterior Features	Private Entrance, Private Yard, Rain Gutters
Lot Description	Back Yard, Backs on to Park/Green Space, Cul-De-Sac, Front Yard, Landscaped, Lawn, Level, No Neighbours Behind, Private, Underground Sprinklers
Roof	Asphalt Shingle
Construction	Concrete, Stone, Vinyl Siding
Foundation	Poured Concrete

## Additional Information

Date Listed	August 12th, 2025
Days on Market	1
Zoning	DCD-9A

## Listing Details

Listing Office	PG Direct Realty Ltd.
----------------	-----------------------

Data is supplied by Pillar 9â„¢ MLS® System. Pillar 9â„¢ is the owner of the copyright in its MLS® System. Data is deemed reliable but is not guaranteed accurate by Pillar 9â„¢. The trademarks MLS®, Multiple Listing Service® and the associated logos are owned by The Canadian Real Estate Association (CREA) and identify the quality of services provided by real estate professionals who are members of CREA. Used under license.