

\$329,000 - 310 1 Street E, Marshall

MLS® #A2248069

\$329,000

5 Bedroom, 3.00 Bathroom, 1,374 sqft
Residential on 0.20 Acres

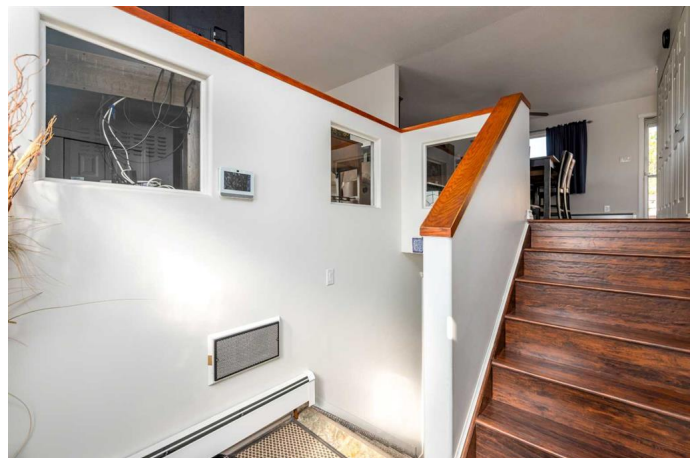
NONE, Marshall, Saskatchewan

Welcome to this beautifully maintained 5-bedroom, 3-bathroom home, perfectly situated at the end of a quiet street in the friendly community of Marshall. Offering over 2,000 sq ft of total developed comfortable living space, this property is ideal for a growing family. Inside, you'll find an inviting open-concept layout with a bright living room, a functional kitchen with plenty of cabinetry, and a generous dining area perfect for family meals. The bedrooms are spacious and well-appointed, with the primary suite featuring its own private ensuite. The fully finished basement adds even more living space, with a large family room, additional bedrooms, and a full bathroom. Outside, enjoy the expansive yard — perfect for kids, pets, or summer gatherings — along with a detached garage for parking and extra storage. Located close to the school and all local amenities, this home combines comfort, space, and a prime location. Move-in ready and in excellent condition, this property is one you won't want to miss! Check out the 3D virtual tour!

Built in 1978

Essential Information

MLS® #	A2248069
Price	\$329,000
Bedrooms	5
Bathrooms	3.00



Full Baths	2
Half Baths	1
Square Footage	1,374
Acres	0.20
Year Built	1978
Type	Residential
Sub-Type	Detached
Style	Bi-Level
Status	Active

Community Information

Address	310 1 Street E
Subdivision	NONE
City	Marshall
County	Saskatchewan
Province	Saskatchewan
Postal Code	S0M 1R0

Amenities

Parking Spaces	4
Parking	Double Garage Detached
# of Garages	2

Interior

Interior Features	Ceiling Fan(s), Open Floorplan, Storage
Appliances	Dishwasher, Range Hood, Refrigerator, Stove(s), Washer/Dryer, Window Coverings
Heating	Electric, Boiler
Cooling	None
Fireplace	Yes
# of Fireplaces	1
Fireplaces	Wood Burning
Has Basement	Yes
Basement	Finished, Full

Exterior

Exterior Features	Private Yard
Lot Description	Back Yard, City Lot, Few Trees, Front Yard, Lawn, Rectangular Lot
Roof	Asphalt Shingle

Construction	Vinyl Siding, Wood Frame
Foundation	Wood

Additional Information

Date Listed	August 13th, 2025
Zoning	R1

Listing Details

Listing Office	CENTURY 21 DRIVE
----------------	------------------

Data is supplied by Pillar 9â„¢ MLS® System. Pillar 9â„¢ is the owner of the copyright in its MLS® System. Data is deemed reliable but is not guaranteed accurate by Pillar 9â„¢. The trademarks MLS®, Multiple Listing Service® and the associated logos are owned by The Canadian Real Estate Association (CREA) and identify the quality of services provided by real estate professionals who are members of CREA. Used under license.