

\$125,000 - 240 2 Avenue, Drumheller

MLS® #A2248073

\$125,000

1 Bedroom, 1.00 Bathroom, 775 sqft

Residential on 0.07 Acres

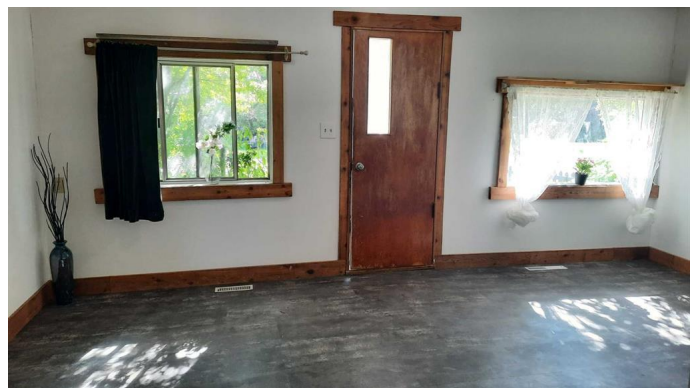
East Coulee, Drumheller, Alberta

Good Vibes in East Coulee ! This cottage style home features Living room with good Art and furniture placement, open dining room so friends can gather. Kitchen with ample space. 4 piece bathroom is almost complete but functioning, and a large Bedroom that could accommodate multiple beds for a bunk room style or spacious enough for all your stuff. There is a nook that would be a good fit for laundry. New 100Amp Electrical panel, new flooring, Fresh paint and ready for new owners. With a fenced front yard and a landscaped back yard with shed and fire pit. East coulee has a potable water station at the entrance.

Built in 1930

Essential Information

MLS® #	A2248073
Price	\$125,000
Bedrooms	1
Bathrooms	1.00
Full Baths	1
Square Footage	775
Acres	0.07
Year Built	1930
Type	Residential
Sub-Type	Detached
Style	Bungalow
Status	Active



Community Information

Address	240 2 Avenue
Subdivision	East Coulee
City	Drumheller
County	Drumheller
Province	Alberta
Postal Code	T0J1B0

Amenities

Parking Spaces	2
Parking	Off Street

Interior

Interior Features	Open Floorplan
Appliances	Electric Stove, Refrigerator
Heating	Forced Air, Natural Gas
Cooling	None
Has Basement	Yes
Basement	Partial, Crawl Space

Exterior

Exterior Features	Fire Pit, Private Yard
Lot Description	Back Lane, Back Yard, Landscaped
Roof	Asphalt Shingle
Construction	Mixed
Foundation	Other

Additional Information

Date Listed	August 12th, 2025
Days on Market	2
Zoning	ND

Listing Details

Listing Office	RE/MAX Now
----------------	------------

Data is supplied by Pillar 9â„¢ MLS® System. Pillar 9â„¢ is the owner of the copyright in its MLS® System. Data is deemed reliable but is not guaranteed accurate by Pillar 9â„¢. The trademarks MLS®, Multiple Listing Service® and the associated logos are owned by The Canadian Real Estate Association (CREA) and identify the quality of services provided by real estate professionals who are members of CREA. Used under license.