

\$289,900 - 1313, 1000 Somervale Court Sw, Calgary

MLS® #A2248074

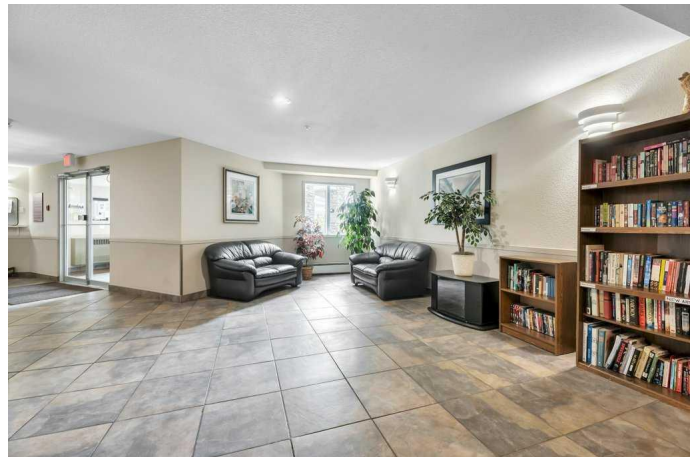
\$289,900

2 Bedroom, 2.00 Bathroom, 847 sqft

Residential on 0.00 Acres

Somerset, Calgary, Alberta

This is THE ONE youâ€™ve been waiting for! Welcome to this beautifully UPDATED 2-BEDROOM, 2-BATHROOM CONDO with one assigned parking stall, perfectly located in the heart of Somerset. With ALL UTILITIES INCLUDED in the condo fees, this home offers incredible value and effortless, low-maintenance living. Lovingly maintained and thoughtfully upgraded, this condo features STAINLESS STEEL APPLIANCES (2020), NEW COUNTERTOPS (2024), A STYLISH BACKSPLASH (2024), AND A DEEP KITCHEN SINK (2024), along with NEW CARPETING IN BOTH BEDROOMS (2023) and FRESH PAINT in key areas. The spacious entryway opens into a bright and welcoming OPEN-CONCEPT LAYOUT, where the living room is centered around a COZY CORNER FIREPLACE—an ideal space to relax or entertain. The dining area provides ample space for gatherings, while the updated kitchen shines with SLEEK FINISHES, UNDER-CABINET LIGHTING, and a MODERN, FUNCTIONAL DESIGN. The SPLIT-BEDROOM LAYOUT ensures privacy, with the PRIMARY SUITE offering a WALK-THROUGH CLOSET leading to a freshly painted 4-PIECE ENSUITE. The second bedroom is generously sized and conveniently located next to the MAIN 4-PIECE BATHROOM, making it perfect for guests, roommates, or a home office. Additional highlights include IN-SUITE LAUNDRY, PLENTY OF IN-SUITE



STORAGE, and a COVERED BALCONY, ideal for enjoying your morning coffee or hosting a BBQ. This well-managed complex is situated just minutes from TRANSIT, SCHOOLS, SHOPPING, RESTAURANTS, AND PARKS—everything you need is right at your doorstep. This is your opportunity to own this STYLISH, MOVE-IN READY CONDO in one of Calgary's most convenient and desirable communities. SCHEDULE YOUR SHOWING TODAY!

Built in 2001

Essential Information

MLS® #	A2248074
Price	\$289,900
Bedrooms	2
Bathrooms	2.00
Full Baths	2
Square Footage	847
Acres	0.00
Year Built	2001
Type	Residential
Sub-Type	Apartment
Style	Single Level Unit
Status	Active

Community Information

Address	1313, 1000 Somervale Court Sw
Subdivision	Somerset
City	Calgary
County	Calgary
Province	Alberta
Postal Code	T2Y 4K4

Amenities

Amenities	Elevator(s), Park, Visitor Parking
Parking Spaces	1
Parking	Assigned, Stall

Interior

Interior Features	Closet Organizers, Laminate Counters, Open Floorplan
Appliances	Dishwasher, Electric Stove, Refrigerator, Washer/Dryer Stacked, Window Coverings
Heating	Baseboard, Boiler
Cooling	None
Fireplace	Yes
# of Fireplaces	1
Fireplaces	Gas, Living Room, Mantle, Tile
# of Stories	4

Exterior

Exterior Features	Balcony
Roof	Asphalt Shingle
Construction	Vinyl Siding

Additional Information

Date Listed	August 18th, 2025
Zoning	M-C2 d75

Listing Details

Listing Office	RE/MAX Landan Real Estate
----------------	---------------------------

Data is supplied by Pillar 9â„¢ MLS® System. Pillar 9â„¢ is the owner of the copyright in its MLS® System. Data is deemed reliable but is not guaranteed accurate by Pillar 9â„¢. The trademarks MLS®, Multiple Listing Service® and the associated logos are owned by The Canadian Real Estate Association (CREA) and identify the quality of services provided by real estate professionals who are members of CREA. Used under license.