

\$599,700 - 147 Webster Drive, Red Deer

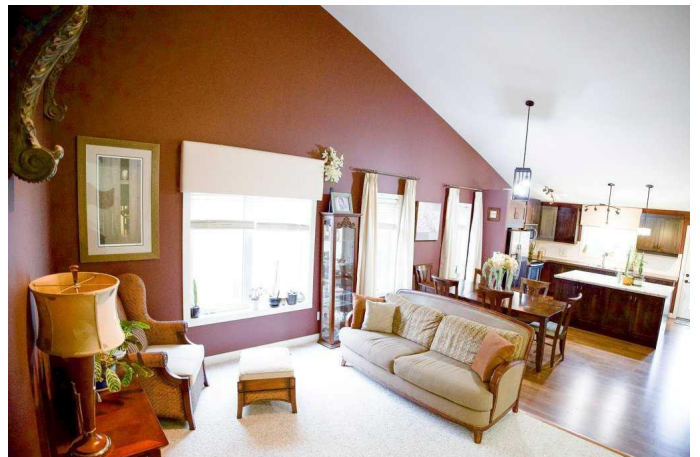
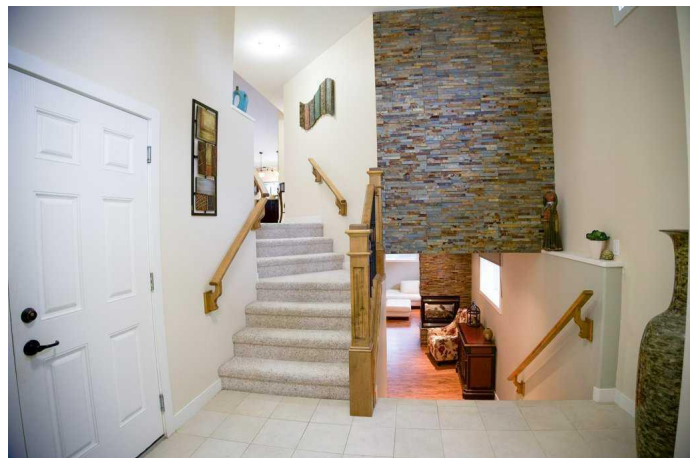
MLS® #A2248189

\$599,700

5 Bedroom, 3.00 Bathroom, 1,580 sqft
Residential on 0.12 Acres

Westlake, Red Deer, Alberta

Nestled in the prestigious community of Westlake, this beautifully upgraded 5-bedroom, 3-bath modified bi-level offers style, comfort, and an unbeatable location. From the spacious front entry, step into a bright open-concept main floor where soaring vaulted ceilings enhance the sense of space. The inviting living room flows into the dining area and a chef's kitchen featuring granite countertops, stainless steel appliances, a large island with seating, a corner pantry, and a sleek tile backsplash—perfect for everyday living and entertaining. The private primary suite is set above the garage, offering a relaxing retreat with a spa-inspired 5-piece ensuite complete with a corner soaker tub, separate shower, and walk-in closet. Two additional bedrooms and a full bathroom complete the main level. Downstairs, the fully finished basement offers a spacious family room with a three-sided gas fireplace, two more bedrooms (ideal for guests, a home office, or gym), a modern 3-piece bathroom, and a wet bar with wine fridge. In-floor heating is roughed in for extra comfort. Outside, enjoy a backyard designed for both relaxation and gatherings, with a large entertaining deck, a second deck for quiet moments, a tranquil pond, and a firepit patio. The double attached garage provides plenty of parking and storage. Recent updates include a newer furnace, brand-new shingles on both the house and garage (Oct 2024), and on-demand hot water. Located close to walking trails, Heritage



Ranch, Red Deer Polytechnic, South Hill, downtown, and Hwy 2, this Westlake home is move-in ready and waiting for its next owners.

Built in 2008

Essential Information

MLS® #	A2248189
Price	\$599,700
Bedrooms	5
Bathrooms	3.00
Full Baths	3
Square Footage	1,580
Acres	0.12
Year Built	2008
Type	Residential
Sub-Type	Detached
Style	Modified Bi-Level
Status	Active

Community Information

Address	147 Webster Drive
Subdivision	Westlake
City	Red Deer
County	Red Deer
Province	Alberta
Postal Code	T4N7G6

Amenities

Parking Spaces	4
Parking	Concrete Driveway, Double Garage Attached, Garage Door Opener
# of Garages	2

Interior

Interior Features	Double Vanity, Granite Counters, Kitchen Island, Tankless Hot Water, Vaulted Ceiling(s), Walk-In Closet(s)
Appliances	Dishwasher, Microwave Hood Fan, Refrigerator, Washer/Dryer, Electric Oven
Heating	Forced Air, In Floor Roughed-In

Cooling	None
Fireplace	Yes
# of Fireplaces	1
Fireplaces	Family Room, Gas
Has Basement	Yes
Basement	Finished, Full

Exterior

Exterior Features	Private Yard
Lot Description	Back Lane, Back Yard, Landscaped
Roof	Asphalt Shingle
Construction	Wood Frame
Foundation	Poured Concrete

Additional Information

Date Listed	August 12th, 2025
Days on Market	1
Zoning	R-L

Listing Details

Listing Office	Royal LePage Network Realty Corp.
----------------	-----------------------------------

Data is supplied by Pillar 9â„¢ MLSÂ® System. Pillar 9â„¢ is the owner of the copyright in its MLSÂ® System. Data is deemed reliable but is not guaranteed accurate by Pillar 9â„¢. The trademarks MLSÂ®, Multiple Listing ServiceÂ® and the associated logos are owned by The Canadian Real Estate Association (CREA) and identify the quality of services provided by real estate professionals who are members of CREA. Used under license.