

\$157,000 - 401, 13102 22 Avenue, Blairmore

MLS® #A2248558

\$157,000

1 Bedroom, 1.00 Bathroom, 585 sqft

Residential on 0.00 Acres

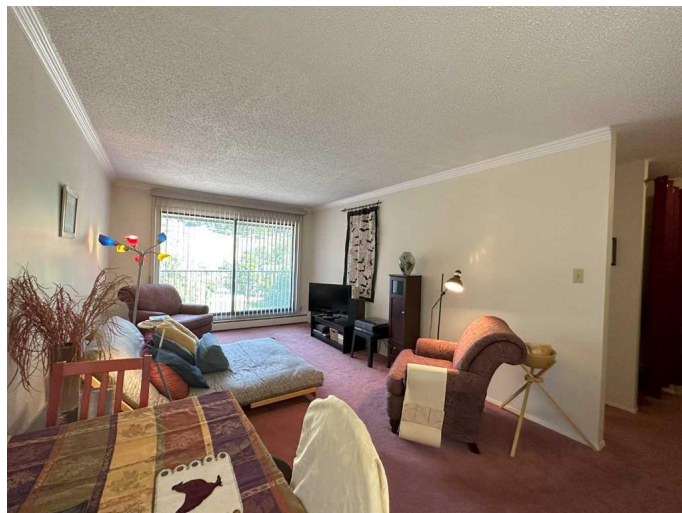
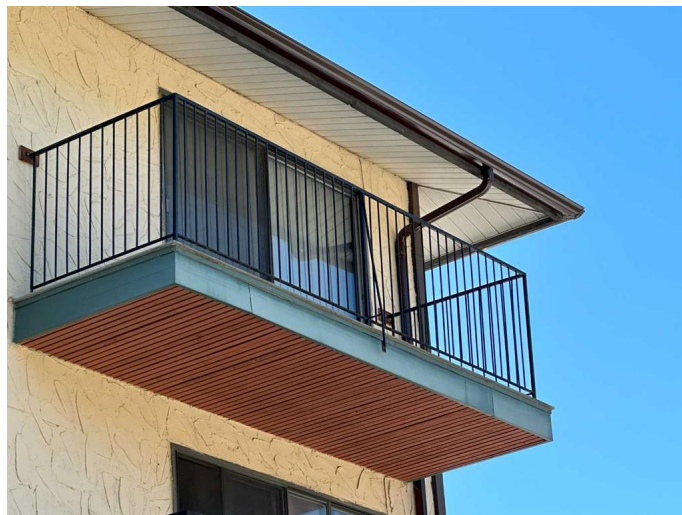
NONE, Blairmore, Alberta

Top floor corner unit at Crowsnest Mountain Condominiums. This nice apartment has fantastic mountain views, including our beloved Pass Powder Keg. Very affordable condo fees include heat and municipal utilities. This is a very clean, well kept, and ready to move in one bedroom condo. Whether you want a mountain weekend get-a-way, or looking for a well priced starter home, this property hits the mark. This condominium building has a peaked roof which keeps the snow at bay and keeps condo fees affordable. Crowsnest Pass offers an opportunity to own spectacular Rocky Mountain real estate at an affordable price. Whether you walk, ride or hike there are hundreds of kilometers of pristine mountain trails to discover and explore.

Built in 1977

Essential Information

MLS® #	A2248558
Price	\$157,000
Bedrooms	1
Bathrooms	1.00
Full Baths	1
Square Footage	585
Acres	0.00
Year Built	1977
Type	Residential



Sub-Type	Apartment
Style	Single Level Unit
Status	Active

Community Information

Address	401, 13102 22 Avenue
Subdivision	NONE
City	Blairmore
County	Crowsnest Pass
Province	Alberta
Postal Code	T0K 0E0

Amenities

Amenities	Laundry
Parking Spaces	1
Parking	Stall

Interior

Interior Features	No Smoking Home
Appliances	Electric Stove, Refrigerator
Heating	Boiler
Cooling	None
# of Stories	4

Exterior

Exterior Features	Balcony
Construction	Mixed

Additional Information

Date Listed	August 11th, 2025
Days on Market	1
Zoning	Residential

Listing Details

Listing Office	ROYAL LEPAGE SOUTH COUNTRY - Crowsnest Pass
----------------	---

Data is supplied by Pillar 9â„¢ MLS® System. Pillar 9â„¢ is the owner of the copyright in its MLS® System. Data is deemed reliable but is not guaranteed accurate by Pillar 9â„¢. The trademarks MLS®, Multiple Listing Service® and the associated logos are owned by The Canadian Real Estate Association (CREA) and identify the quality of services provided by real estate professionals who are members of CREA. Used under license.