

\$475,000 - 465 Schofield Street, Pincher Creek

MLS® #A2249670

\$475,000

5 Bedroom, 3.00 Bathroom, 1,157 sqft

Residential on 0.26 Acres

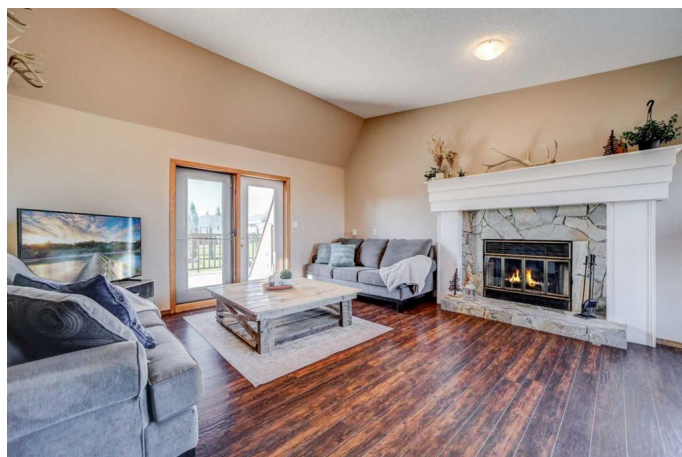
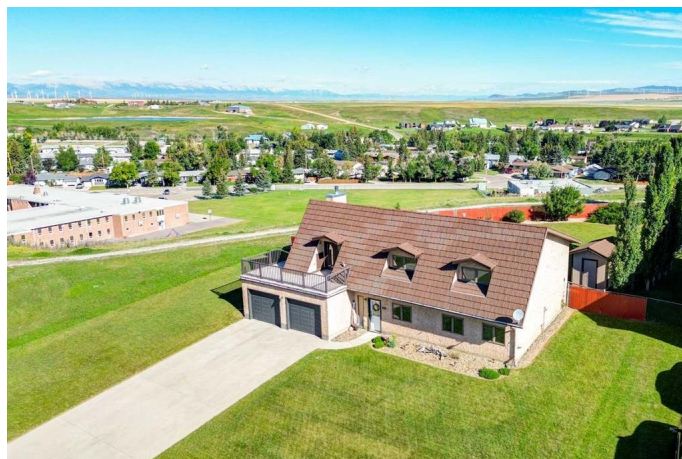
NONE, Pincher Creek, Alberta

One of the advantages of living in Pincher Creek is our proximity to the mountains. Located at the end of a quiet cul-de-sac, this two-storey home is built to take full advantage of those gorgeous mountain views! A deck off the second level wraps around three sides of the home so you can enjoy the morning sunshine and then watch the sun set over the mountains. An attached lower deck provides sheltered privacy, and stairs take you down to the generous, fully fenced yard with plenty of room for playing, gardening, or pets. With five bedrooms and two and a half bathrooms, this home has room to grow with you. The double attached garage comes with a separate workshop at the back for your hobbies or extra storage. This property has been very well maintained and is move-in ready. Call your favourite REALTOR® to see it today!

Built in 1988

Essential Information

MLS® #	A2249670
Price	\$475,000
Bedrooms	5
Bathrooms	3.00
Full Baths	2
Half Baths	1
Square Footage	1,157
Acres	0.26



Year Built	1988
Type	Residential
Sub-Type	Detached
Style	2 Storey
Status	Active

Community Information

Address	465 Schofield Street
Subdivision	NONE
City	Pincher Creek
County	Pincher Creek No. 9, M.D. of
Province	Alberta
Postal Code	T0K1W0

Amenities

Parking Spaces	4
Parking	Double Garage Attached, Off Street
# of Garages	2

Interior

Interior Features	French Door, No Smoking Home, Walk-In Closet(s)
Appliances	Central Air Conditioner, Dishwasher, Electric Cooktop, Microwave, Refrigerator, Washer/Dryer, Window Coverings, Double Oven
Heating	Forced Air
Cooling	Central Air
Fireplace	Yes
# of Fireplaces	1
Fireplaces	Wood Burning
Has Basement	Yes
Basement	Finished, Full, Walk-Out

Exterior

Exterior Features	None
Lot Description	Back Yard, Backs on to Park/Green Space, Cul-De-Sac, Few Trees, Irregular Lot, Lawn, No Neighbours Behind, Views
Roof	Metal, Shingle
Construction	Stucco, Wood Frame
Foundation	Slab, Wood, Combination

Additional Information

Date Listed	August 21st, 2025
Days on Market	1
Zoning	R1

Listing Details

Listing Office	Grassroots Realty Group
----------------	-------------------------

Data is supplied by Pillar 9â„¢ MLS® System. Pillar 9â„¢ is the owner of the copyright in its MLS® System. Data is deemed reliable but is not guaranteed accurate by Pillar 9â„¢. The trademarks MLS®, Multiple Listing Service® and the associated logos are owned by The Canadian Real Estate Association (CREA) and identify the quality of services provided by real estate professionals who are members of CREA. Used under license.