

\$849,900 - 280 Windermere Drive, Chestermere

MLS® #A2250043

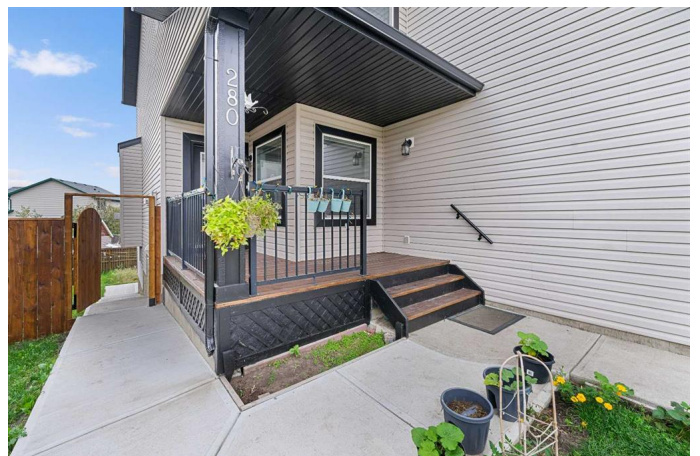
\$849,900

6 Bedroom, 4.00 Bathroom, 2,542 sqft

Residential on 0.01 Acres

Westmere, Chestermere, Alberta

Directly Across From a Park | Seconds to Prairie Waters Elementary School | Quick Walk to Chestermere Lake & All Shopping | Walkout Basement Suite(illegal) | Brand New Blinds | 2 Furnaces & 2 Hot Water Tanks | 2,542 SqFt | Total of 6 Beds & 3.5 Baths | Expansive Living Space | Open Floor Plan | Spacious Kitchen | Quartz Countertops | Stainless Steel Appliances | Extended Kitchen Island with Barstool Seating & Built-in Wine Rack | Walk-through Pantry | Large Windows | Bright Natural Light | Main Level Office | 4 Upper Level Bedrooms | Primary Ensuite with Soaking Jet Tub | Upper Bonus Room | Vaulted Ceilings | Upper Level Laundry Room | Walkout Basement Suite(illegal) | Separate Entry | 2 Basement Beds & 1 Bath | Incredible Backyard | Massive Lawn | Double Attached Front Garage | Driveway. What more could you ask for from this stunning 2,542 SqFt family home in the perfect location! The front door opens to a foyer with closet space keeping it organized. The main level has great living space with a front family room and a living room with a gas fireplace. The living room open to the kitchen and dining make this the perfect to host friends & family. The kitchen is outfitted with wood cabinets, stainless steel appliances, laminate countertops and a centre island with barstool seating and a built-in wrack. The kitchen has a walkthrough pantry for dry goods storage that connects to the mud room & interior garage door. The dining room overlooks your



backyard with large windows letting natural light beam through. The main level office is a bonus for your work-from-home lifestyle. Head upstairs to 3 additional bedrooms grandiose bedrooms a family room with vaulted ceilings & a full laundry room. The primary bedroom is paired with a walk-in closet and private 5pc ensuite with a deep soaking tub, dual vanities & a walk-in shower. Bedrooms 2 & 3 upstairs are both sizeable and share the 4pc bath with a tub/shower combo. The family room is extravagant and comfortable with plush carpet and large windows. The upper level laundry is a treat as its near majority of your bedrooms. Downstairs, the WALKOUT basement is set up as a suite(illegal) with its own separate access at the rear of the home. The open floor plan living room and kitchen provide space for flexible living and dining space. The basement kitchen has cabinets both above & below, stainless steel appliances and laminate countertops. The 2 bedrooms on this level are a great size & share the 3pc bath with a walk-in shower. This lower level has storage and the utility room! Step outside to a massive backyard with plenty of space for the adults to enjoy while the kids play in the park across the street! Your backyard has plenty of room for a large outdoor dining set and more! The location can't be beat; walking distance to Chestermere Lake, the major shopping complex with all amenities and the Prairie Waters Elementary School. Don't miss out, hurry and book your showing at this incredible family home today!

Built in 2006

Essential Information

MLS® #	A2250043
Price	\$849,900
Bedrooms	6

Bathrooms	4.00
Full Baths	3
Half Baths	1
Square Footage	2,542
Acres	0.01
Year Built	2006
Type	Residential
Sub-Type	Detached
Style	2 Storey
Status	Active

Community Information

Address	280 Windermere Drive
Subdivision	Westmere
City	Chestermere
County	Chestermere
Province	Alberta
Postal Code	T1X 1S3

Amenities

Parking Spaces	4
Parking	Double Garage Attached, Driveway, Garage Faces Front, On Street
# of Garages	2

Interior

Interior Features	Built-in Features, Ceiling Fan(s), Chandelier, Closet Organizers, High Ceilings, Kitchen Island, Open Floorplan, Pantry, Quartz Counters, Recessed Lighting, Vinyl Windows, Walk-In Closet(s), Vaulted Ceiling(s)
Appliances	Dishwasher, Dryer, Electric Stove, Garage Control(s), Range Hood, Refrigerator, Washer, Window Coverings
Heating	Forced Air
Cooling	None
Fireplace	Yes
# of Fireplaces	1
Fireplaces	Gas
Has Basement	Yes
Basement	Full, Suite, Walk-Out

Exterior

Exterior Features	Lighting, Rain Gutters
Lot Description	Back Yard, Interior Lot, Lawn, Rectangular Lot, Street Lighting
Roof	Asphalt Shingle
Construction	Stone, Vinyl Siding, Wood Frame
Foundation	Poured Concrete

Additional Information

Date Listed	September 8th, 2025
Days on Market	2
Zoning	R-1

Listing Details

Listing Office	RE/MAX Crown
----------------	--------------

Data is supplied by Pillar 9â„¢ MLS® System. Pillar 9â„¢ is the owner of the copyright in its MLS® System. Data is deemed reliable but is not guaranteed accurate by Pillar 9â„¢. The trademarks MLS®, Multiple Listing Service® and the associated logos are owned by The Canadian Real Estate Association (CREA) and identify the quality of services provided by real estate professionals who are members of CREA. Used under license.