

\$275,000 - 301, 880 Centre Avenue Ne, Calgary

MLS® #A2251287

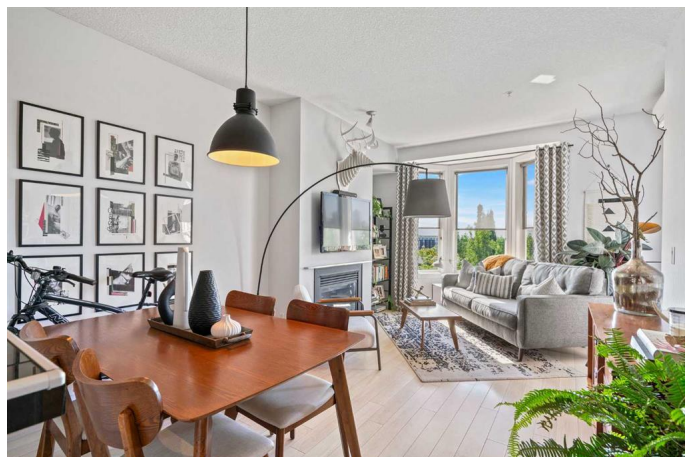
\$275,000

1 Bedroom, 1.00 Bathroom, 525 sqft

Residential on 0.00 Acres

Bridgeland/Riverside, Calgary, Alberta

Attention investors & first-time buyers! Welcome to this beautifully maintained 1bed/1bath condo in the sought-after Bella Citta building, located in the heart of Bridgeland—one of Calgary’s most vibrant inner-city communities. Enjoy breathtaking south-facing views of the downtown skyline and Murdoch Park (formerly the site of the General Hospital) right from your private, quiet balcony—perfect for morning coffee or evening drinks. The balcony also features a BBQ hookup for easy outdoor entertaining. This thoughtfully designed unit offers 525sq ft of open-concept living space and offers high-end laminate flooring throughout the living, dining and bedroom areas; durable ceramic tile in the kitchen, hallway and bathroom. The 4-piece bathroom and convenient stacked washer/dryer are tucked away down the hall for privacy. It has central air conditioning, a single assigned parking stall in the underground parkade, storage locker and bike storage. The Bella Citta is pet-friendly (maximum 1 cat or dog up to 14 kg/30 lbs with Board approval). Live the Bridgeland lifestyle—home to a variety of unique boutiques, trendy cafes, renowned restaurants, distilleries and ice cream parlours, just a block away. Murdoch Park features a sports field, skating rink in the winter, and a lively community centre—a true hub of activity. With easy access to Memorial Drive and downtown, this condo offers both comfort and convenience. Don’t miss your chance



to find your new home in one of Calgary's most desirable neighborhoods! Give your favourite REALTOR a call today. Don't forget to check out the 3D tour!

Built in 2005

Essential Information

MLS® #	A2251287
Price	\$275,000
Bedrooms	1
Bathrooms	1.00
Full Baths	1
Square Footage	525
Acres	0.00
Year Built	2005
Type	Residential
Sub-Type	Apartment
Style	Single Level Unit
Status	Active

Community Information

Address	301, 880 Centre Avenue Ne
Subdivision	Bridgeland/Riverside
City	Calgary
County	Calgary
Province	Alberta
Postal Code	T2E 9C3

Amenities

Amenities	Elevator(s), Visitor Parking, Bicycle Storage, Car Wash
Parking Spaces	1
Parking	Assigned, Parkade, Stall, Underground
# of Garages	1

Interior

Interior Features	Breakfast Bar, Vinyl Windows, Tile Counters
Appliances	Dishwasher, Microwave Hood Fan, Refrigerator, Washer/Dryer Stacked, Window Coverings, Electric Range

Heating	In Floor, Natural Gas
Cooling	Central Air
Fireplace	Yes
# of Fireplaces	1
Fireplaces	Gas, Living Room
# of Stories	4

Exterior

Exterior Features	Courtyard
Roof	Membrane
Construction	Brick, Wood Frame, Veneer
Foundation	Poured Concrete

Additional Information

Date Listed	September 2nd, 2025
Days on Market	9
Zoning	DC (pre 1P2007)

Listing Details

Listing Office	Royal LePage Benchmark
----------------	------------------------

Data is supplied by Pillar 9â„¢ MLS® System. Pillar 9â„¢ is the owner of the copyright in its MLS® System. Data is deemed reliable but is not guaranteed accurate by Pillar 9â„¢. The trademarks MLS®, Multiple Listing Service® and the associated logos are owned by The Canadian Real Estate Association (CREA) and identify the quality of services provided by real estate professionals who are members of CREA. Used under license.