

\$420,000 - 14 Rasmussen Place, Standard

MLS® #A2252932

\$420,000

5 Bedroom, 2.00 Bathroom, 1,383 sqft

Residential on 0.20 Acres

NONE, Standard, Alberta

Village of Standard Alberta (30 km from The famous Rosebud Dinner Theatre)

20 minutes to Strathmore

-40 minutes to Drumheller

â€“ 40 minutes to Chestermere

-56 minutes to Calgary City Limits East.

Discover the perfect blend of small-town charm and comfortable living, in this beautiful home located in the welcoming Village of Standard Alberta. Villageofstandard.ca

All school aged children are bused to Wheatland Crossing School which also offers the public a fitness center inside the school through membership

<https://wheatlandcrossing.ghsd75.ca/home/news>

The Village also Provides a Privately owned daycare located on mainstreet; Country Kids Day Care:

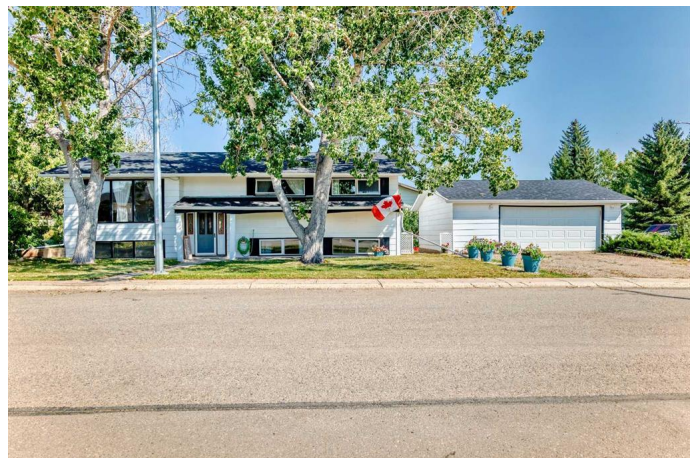
<https://www.countrykidsccs.com>

There are family-oriented amenities including a sports complex, curling rink with restaurant and lounge attached. Playgrounds, Tot-Lot with Equipment, and a library that provides after school activities, and the famous Oyster Supper. The Grocery Store is open 7 days a week with varying hours on statutory holidays.

Clover Farms Grocery Store, provides a weekly flyer with specials.

There is a central post office, as well as tennis and volleyball courts.

Standard has a welcome committee for newcomers and complimentary gift basket.



Lions and Lionette's Clubs sponsor many activities during the year.

The Seniors Center is located next to the grocery store and offers potlucks every month, a full-sized kitchen with dishes and anyone can rent the facility for events.

There is a beautiful new community center for large events and a new outdoor skating rink.

<https://www.standardcommunityhall.com/>

This home offers a large country kitchen with deck facing East, five bedrooms and a large bonus room/flex Room that can be made into anything you can imagine.

A spacious living room, offering dining space as well. Three bedrooms upstairs; new windows and a full bath.

The fully developed lower level has two bedrooms and a third bonus room, and also a three-piece bathroom with tiled shower, sink, lavatory, and makeup mirror.

The lower level has large beautiful thermal windows, offering plenty of light. The media room is perfect for TV, games and recreation with a cozy gas heater. There is a cold cellar for canning or beverage storage.

The laundry room has plenty of space and washer and dryer are included.

Large double garage with two controllers. Fully insulated with slot wall for workshop setup.

New roof on house and garage.

Newer hot water tank (2022) and Lennox Furnace just inspected! Receipt provided by ATCO.

Whether you're gathering with family, entertaining friends, or simply enjoying the peace

and quiet of prairie living, this property provides the space and warmth you've been

looking for.

With wide-open skies, safe streets, and a

community that makes you feel right at home,
Standard is the perfect place to put down
roots. Donâ€™t miss the chance to make this
inviting home and lifestyle, completely yours!

Built in 1974

Essential Information

MLS® #	A2252932
Price	\$420,000
Bedrooms	5
Bathrooms	2.00
Full Baths	2
Square Footage	1,383
Acres	0.20
Year Built	1974
Type	Residential
Sub-Type	Detached
Style	Bi-Level
Status	Active

Community Information

Address	14 Rasmussen Place
Subdivision	NONE
City	Standard
County	Wheatland County
Province	Alberta
Postal Code	T0J 3G0

Amenities

Parking Spaces	2
Parking	Double Garage Detached, Off Street
# of Garages	2

Interior

Interior Features	Ceiling Fan(s)
Appliances	Dishwasher, Garage Control(s), Gas Stove, Refrigerator, Window Coverings
Heating	Forced Air, Natural Gas

Cooling	None
Has Basement	Yes
Basement	Finished, Full

Exterior

Exterior Features	None
Lot Description	Back Yard, Cul-De-Sac, Treed
Roof	Asphalt Shingle
Construction	Wood Frame
Foundation	Poured Concrete

Additional Information

Date Listed	September 8th, 2025
Days on Market	9
Zoning	R1

Listing Details

Listing Office	RE/MAX Landan Real Estate
----------------	---------------------------

Data is supplied by Pillar 9â„¢ MLS® System. Pillar 9â„¢ is the owner of the copyright in its MLS® System. Data is deemed reliable but is not guaranteed accurate by Pillar 9â„¢. The trademarks MLS®, Multiple Listing Service® and the associated logos are owned by The Canadian Real Estate Association (CREA) and identify the quality of services provided by real estate professionals who are members of CREA. Used under license.