

\$785,000 - 10824 Maplebend Drive Se, Calgary

MLS® #A2253517

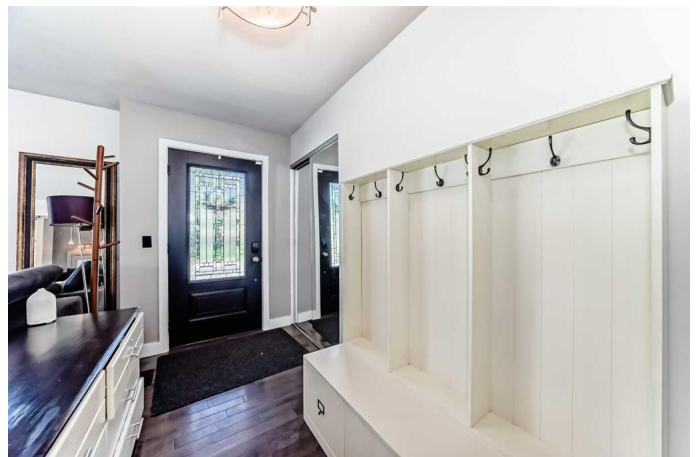
\$785,000

4 Bedroom, 3.00 Bathroom, 1,264 sqft

Residential on 0.13 Acres

Maple Ridge, Calgary, Alberta

Welcome to 10824 Maplebend Drive SE, a beautifully updated and spacious bungalow located on a large corner lot in the highly desirable community of Maple Ridge. This home offers nearly 2,400 square feet of thoughtfully designed living space. The main floor features three generously sized bedrooms, including a good size primary suite complete with a private four-piece ensuite, as well as a spacious five-piece main bathroom. The open-concept kitchen is ideal for both everyday living and entertaining, with a large island, stainless steel appliances, dual oven, and plenty of cabinetry for storage. Large windows on the south and west-facing walls flood the main living areas with natural light. A cozy gas/wood-burning fireplace creates a warm and inviting atmosphere in the main floor living room, perfect for relaxing evenings at home. The fully finished basement includes a large recreation area, a fourth bedroom, an additional four-piece bathroom, a large flex or storage room, and a dedicated wet bar area ideal for entertaining. A traditional wood-burning fireplace adds charm and warmth to the lower-level living space. Outside, the home is surrounded by beautifully landscaped grounds, complete with a private sit-down patio area and ample yard space for outdoor enjoyment. The double detached garage and additional storage options make this property as functional as it is beautiful. Both the home and garage are finished with durable, low-maintenance Hardie board siding.



Additional features include central air conditioning, hardwood flooring on the main level, and an abundance of storage throughout. This home is ideally located just minutes from Maple Ridge Golf Course, Willow Park Golf & Country Club, Southcentre Mall, the public library, parks, schools, and major transit routes. If you're looking for a move-in-ready bungalow in an established and sought-after neighborhood, this is a must-see. Book your private showing at 10824 Maplebend Drive SE today!

Built in 1967

Essential Information

MLS® #	A2253517
Price	\$785,000
Bedrooms	4
Bathrooms	3.00
Full Baths	3
Square Footage	1,264
Acres	0.13
Year Built	1967
Type	Residential
Sub-Type	Detached
Style	Bungalow
Status	Active

Community Information

Address	10824 Maplebend Drive Se
Subdivision	Maple Ridge
City	Calgary
County	Calgary
Province	Alberta
Postal Code	T2J1X5

Amenities

Parking Spaces	2
Parking	Alley Access, Double Garage Detached, Garage Door Opener

of Garages 2

Interior

Interior Features Bar, Breakfast Bar, Double Vanity, Granite Counters, Kitchen Island, Storage

Appliances Built-In Oven, Central Air Conditioner, Dishwasher, Dryer, Garage Control(s), Microwave Hood Fan, Refrigerator, Washer, Electric Cooktop

Heating Forced Air, Natural Gas

Cooling Central Air

Fireplace Yes

of Fireplaces 2

Fireplaces Mixed

Has Basement Yes

Basement Finished, Full

Exterior

Exterior Features BBQ gas line, Private Yard

Lot Description Back Lane, Back Yard, Corner Lot, Front Yard, Garden, Paved

Roof Asphalt Shingle

Construction Composite Siding, Wood Frame, Wood Siding

Foundation Poured Concrete

Additional Information

Date Listed September 4th, 2025

Days on Market 4

Zoning R-CG

Listing Details

Listing Office Century 21 Bamber Realty LTD.

Data is supplied by Pillar 9â„¢ MLS® System. Pillar 9â„¢ is the owner of the copyright in its MLS® System. Data is deemed reliable but is not guaranteed accurate by Pillar 9â„¢. The trademarks MLS®, Multiple Listing Service® and the associated logos are owned by The Canadian Real Estate Association (CREA) and identify the quality of services provided by real estate professionals who are members of CREA. Used under license.