

\$3,000 - B, 10424 96 Avenue, Grande Prairie

MLS® #A2253715

\$3,000

0 Bedroom, 0.00 Bathroom,
Commercial on 0.00 Acres

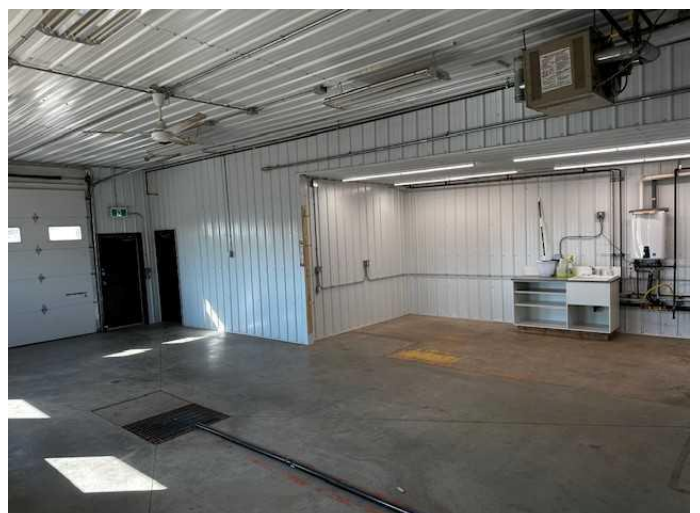
College Park., Grande Prairie, Alberta

Total Monthly Payment \$3000 + GST, Power & Gas! FOR LEASE: 1,660 sq.ft. SHOP/Office in two tenant building on 0.18 Acres Garage: (30'8"x35'7" +/-), one electrical-lift Overhead Door (10'x10+/-), 100 Amp, Updated LED lighting, sump, ceiling fan, overhead unit heater, one washroom, 10' clear ceiling height, washing machine hook-ups. OFFICE: Reception, Two offices & Boardroom - Vinyl Plank Floors, Painted Drywall Walls, T-Bar & LED Lights PARKING: Fenced/Gravel Lot ZONING: IG-General Industrial. LOCATION: College Park. RENT: \$3,000/month + GST. BUDGETED NET COST: Included. UTILITIES: Included in net costs: Water. TENANT PAYS-Power/Gas AVAILABLE: Today! Measurements are +/- and must be confirmed by the recipient prior to being relied upon. It is the tenant/buyers responsibility to ensure use of the property/building/space complies with municipal by-laws and zoning regulations. See <https://cityofgp.com/city-government/bylaws-policies-procedures/bylaws/land-use-bylaw> for more information.

Built in 1962

Essential Information

MLS® #	A2253715
Price	\$3,000
Bathrooms	0.00
Acres	0.00



Year Built	1962
Type	Commercial
Sub-Type	Industrial
Status	Active

Community Information

Address	B, 10424 96 Avenue
Subdivision	College Park.
City	Grande Prairie
County	Grande Prairie
Province	Alberta
Postal Code	T8V 5V2

Additional Information

Date Listed	September 4th, 2025
Days on Market	63

Listing Details

Listing Office	CommVest Realty Ltd.
----------------	----------------------

Data is supplied by Pillar 9â„¢ MLSÂ® System. Pillar 9â„¢ is the owner of the copyright in its MLSÂ® System. Data is deemed reliable but is not guaranteed accurate by Pillar 9â„¢. The trademarks MLSÂ®, Multiple Listing ServiceÂ® and the associated logos are owned by The Canadian Real Estate Association (CREA) and identify the quality of services provided by real estate professionals who are members of CREA. Used under license.