

\$1,600 - 3126 2 Avenue N, Lethbridge

MLS® #A2254789

\$1,600

0 Bedroom, 0.00 Bathroom,
Commercial on 6.67 Acres

Anderson Industrial Park, Lethbridge, Alberta

Prime 2,400 sq ft commercial bay featuring an open-concept showroom at the front, ideal for retail or client-facing operations. Includes a storage mezzanine for efficient inventory management and a make-up air system for optimal ventilation and comfort. Versatile layout suitable for a variety of business uses. Great location with convenient access and ample parking.

Built in 1980

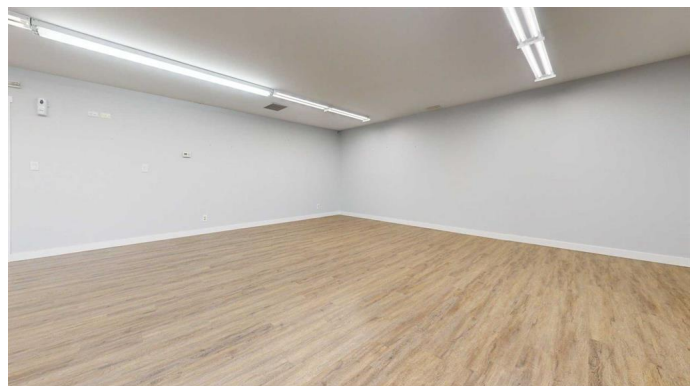
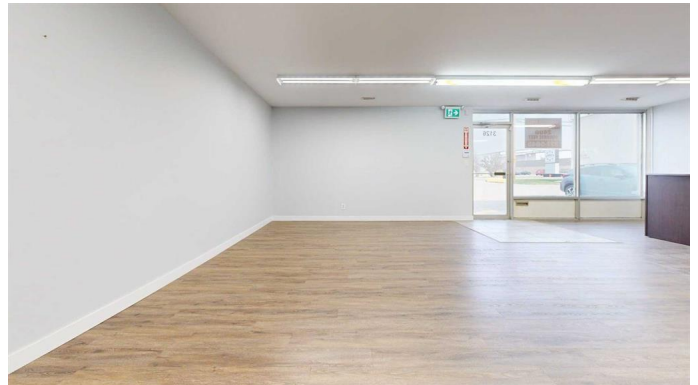
Essential Information

MLS® #	A2254789
Price	\$1,600
Bathrooms	0.00
Acres	6.67
Year Built	1980
Type	Commercial
Sub-Type	Industrial
Status	Active

Community Information

Address	3126 2 Avenue N
Subdivision	Anderson Industrial Park
City	Lethbridge
County	Lethbridge
Province	Alberta
Postal Code	T1H0C6

Additional Information



Date Listed	September 10th, 2025
Days on Market	4
Zoning	I-G

Listing Details

Listing Office	Lethbridge Real Estate.com
----------------	----------------------------

Data is supplied by Pillar 9â„¢ MLS® System. Pillar 9â„¢ is the owner of the copyright in its MLS® System. Data is deemed reliable but is not guaranteed accurate by Pillar 9â„¢. The trademarks MLS®, Multiple Listing Service® and the associated logos are owned by The Canadian Real Estate Association (CREA) and identify the quality of services provided by real estate professionals who are members of CREA. Used under license.