

# \$165,000 - 415, 1632 Saamis Drive Nw, Medicine Hat

MLS® #A2255397

**\$165,000**

2 Bedroom, 1.00 Bathroom, 810 sqft

Residential on 0.00 Acres

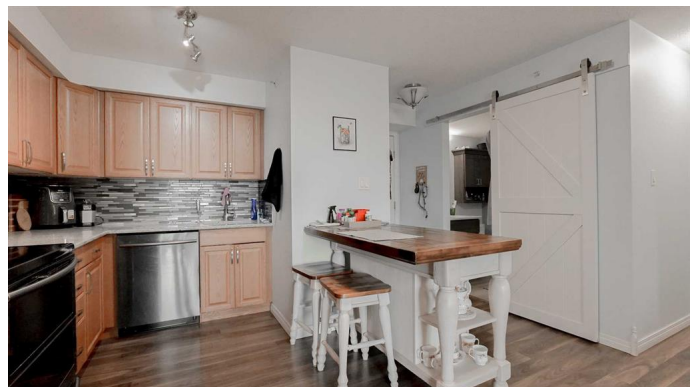
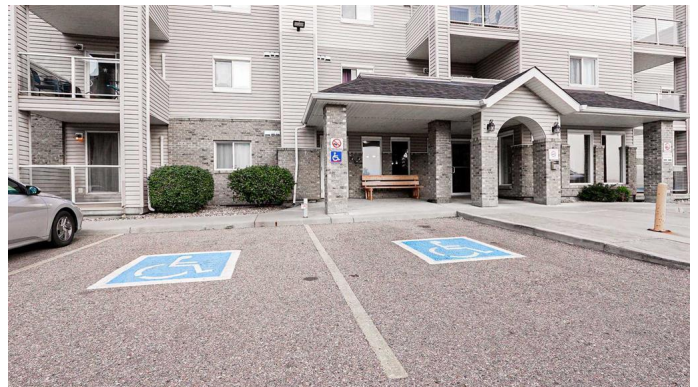
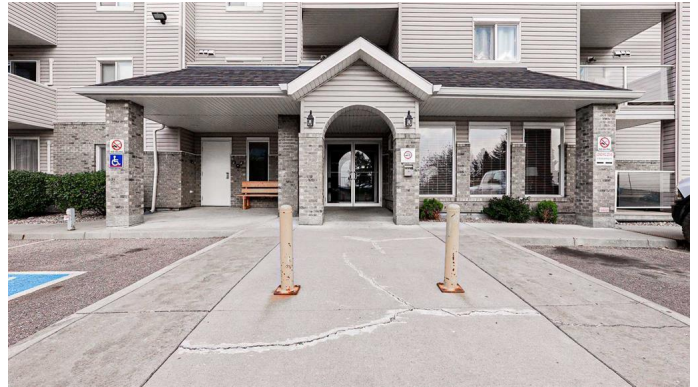
Northwest Crescent Heights, Medicine Hat, Alberta

Lovely updated 2 bedroom, 1 bath condo in NW Crescent Heights. Kitchen has oak cabinets, granite counters and is complimented by black/ stainless appliances and an island. The living area is cozy with patio doors out to a covered balcony to enjoy the outdoors. There are two good size bedrooms with closets that have organizers. The bathroom has a convenient 5 ft. walk in shower and updated fixtures and quartz countertop and boor door. Laminate is newer and throughout. The in unit laundry has a stackable washer /dryer, with a barn door. There is an assigned under ground parking stall to keep you warm when leaving and returning home and a small storage unit. Another out side stall is available for a fee. This warm feeling condo is close to shopping, schools and easy access to the highway. Text or call today for your viewing on this move in ready condo!

Built in 2005

## Essential Information

MLS® #	A2255397
Price	\$165,000
Bedrooms	2
Bathrooms	1.00
Full Baths	1
Square Footage	810



Acres	0.00
Year Built	2005
Type	Residential
Sub-Type	Row/Townhouse
Style	Loft
Status	Active

### Community Information

Address	415, 1632 Saamis Drive Nw
Subdivision	Northwest Crescent Heights
City	Medicine Hat
County	Medicine Hat
Province	Alberta
Postal Code	T1C4X3

### Amenities

Amenities	Elevator(s), Parking, Playground, Secured Parking, Snow Removal, Storage, Trash, Visitor Parking
Parking Spaces	2
Parking	Stall, Underground

### Interior

Interior Features	Kitchen Island, No Smoking Home, Elevator
Appliances	Dishwasher, Microwave Hood Fan, Refrigerator, Stove(s), Washer/Dryer
Heating	Baseboard
Cooling	Central Air
Basement	None

### Exterior

Exterior Features	Balcony
Lot Description	Landscaped, See Remarks
Roof	Asphalt Shingle
Construction	Brick, Concrete, Vinyl Siding
Foundation	Poured Concrete

### Additional Information

Date Listed	September 9th, 2025
Days on Market	1
Zoning	R-MD

HOA Fees480

HOA Fees Freq. MON

Listing Details

Listing Office

ROYAL LEPAGE COMMUNITY REALTY

Data is supplied by Pillar 9â,,ç MLSÂ® System. Pillar 9â,,ç is the owner of the copyright in its MLSÂ® System. Data is deemed reliable but is not guaranteed accurate by Pillar 9â,,ç. The trademarks MLSÂ®, Multiple Listing ServiceÂ® and the associated logos are owned by The Canadian Real Estate Association (CREA) and identify the quality of services provided by real estate professionals who are members of CREA. Used under license.