

# \$225,000 - On Hwy 601, Rural Lacombe County

MLS® #A2255712

**\$225,000**

0 Bedroom, 0.00 Bathroom,  
Land on 17.87 Acres

NONE, Rural Lacombe County, Alberta

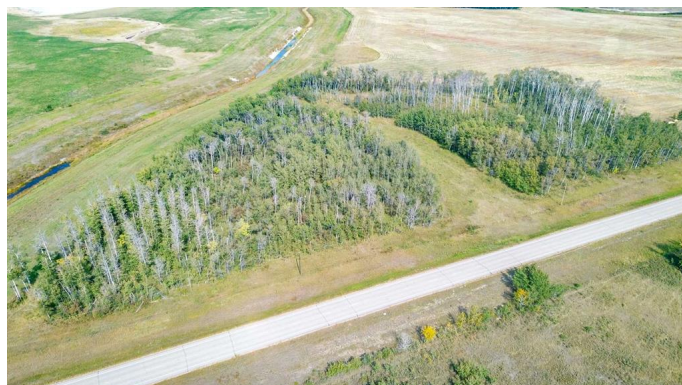
Looking for a quiet retreat away from the city? This 17.87 acre parcel offers the perfect balance of privacy and opportunity. The land is primarily covered with natural bush, providing a beautiful backdrop and endless potential for your vision. Build your dream home tucked into the trees, create a summer getaway surrounded by nature, or you could expand your existing farming operation as the remaining portion of land is seeded down to hay. With room for a hobby farm, trails, or simply enjoying the peace and quiet of the countryside, this property offers flexibility and freedom. Conveniently located between Stettler and Alix, you are close to modern amenities while enjoying the peace of rural living.

## Essential Information

MLS® #	A2255712
Price	\$225,000
Bathrooms	0.00
Acres	17.87
Type	Land
Sub-Type	Residential Land
Status	Active

## Community Information

Address	On Hwy 601
Subdivision	NONE



City	Rural Lacombe County
County	Lacombe County
Province	Alberta
Postal Code	T0C 0B0

### **Additional Information**

Date Listed	September 10th, 2025
Days on Market	1
Zoning	Agriculture

### **Listing Details**

Listing Office	RE/MAX 1st Choice Realty
----------------	--------------------------

Data is supplied by Pillar 9â„¢ MLS® System. Pillar 9â„¢ is the owner of the copyright in its MLS® System. Data is deemed reliable but is not guaranteed accurate by Pillar 9â„¢. The trademarks MLS®, Multiple Listing Service® and the associated logos are owned by The Canadian Real Estate Association (CREA) and identify the quality of services provided by real estate professionals who are members of CREA. Used under license.