

\$650,000 - #4, 205019 100 Range Road Se, Rural Lethbridge County

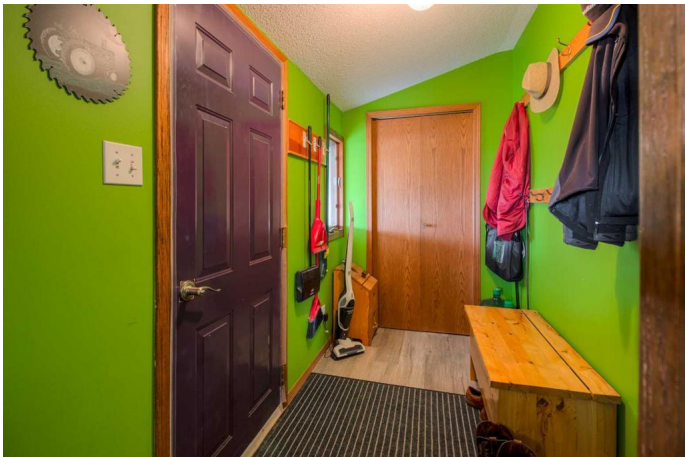
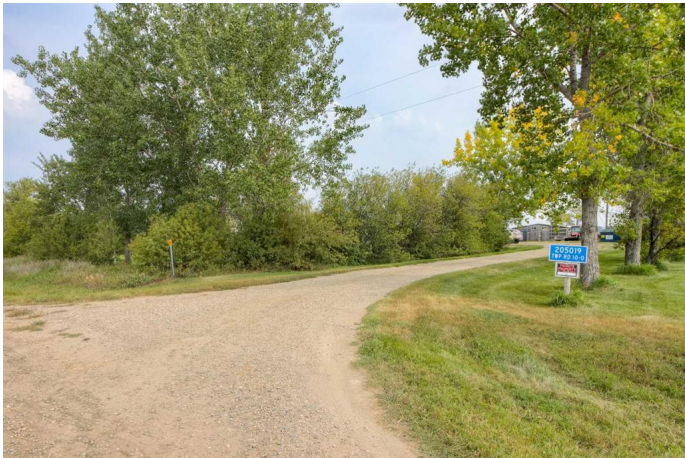
MLS® #A2256835

\$650,000

1 Bedroom, 1.00 Bathroom, 1,172 sqft
Agri-Business on 0.00 Acres

NONE, Rural Lethbridge County, Alberta

Just 15 minutes from downtown Lethbridge, this 8.94 acreage offers the perfect blend of country charm and city convenience. Whether youâ€™re dreaming of starting a hobby farm or simply escaping the hustle of the city, this property is made for peaceful living. The cozy home features a kitchen open to the dining room, a welcoming living room, and a main floor primary bedroom with full bathroom nearby. Upstairs is a quaint half-story bedroom, while the basement provides a family room, additional bedroom or den, and plenty of storage. Outside, the spacious shop is perfect for all your tools and toys, complete with its own bathroom for cleaning up after a day of projects. Evenings are best spent gathered around your firepit, watching the sun set and enjoying the quiet of country life.



Essential Information

MLS® #	A2256835
Price	\$650,000
Bedrooms	1
Bathrooms	1.00
Full Baths	1
Square Footage	1,172
Acres	0.00
Type	Agri-Business
Sub-Type	Agriculture

Style	1 and Half Storey
Status	Active

Community Information

Address	#4, 205019 100 Range Road Se
Subdivision	NONE
City	Rural Lethbridge County
County	Lethbridge County
Province	Alberta
Postal Code	T0K 0T0

Interior

Appliances	See Remarks
------------	-------------

Additional Information

Date Listed	September 17th, 2025
Days on Market	1
Zoning	Ag

Listing Details

Listing Office	REAL BROKER
----------------	-------------

Data is supplied by Pillar 9â„¢ MLS® System. Pillar 9â„¢ is the owner of the copyright in its MLS® System. Data is deemed reliable but is not guaranteed accurate by Pillar 9â„¢. The trademarks MLS®, Multiple Listing Service® and the associated logos are owned by The Canadian Real Estate Association (CREA) and identify the quality of services provided by real estate professionals who are members of CREA. Used under license.