

\$399,900 - 254035 Range Road 241, Rural Wheatland County

MLS® #A2258088

\$399,900

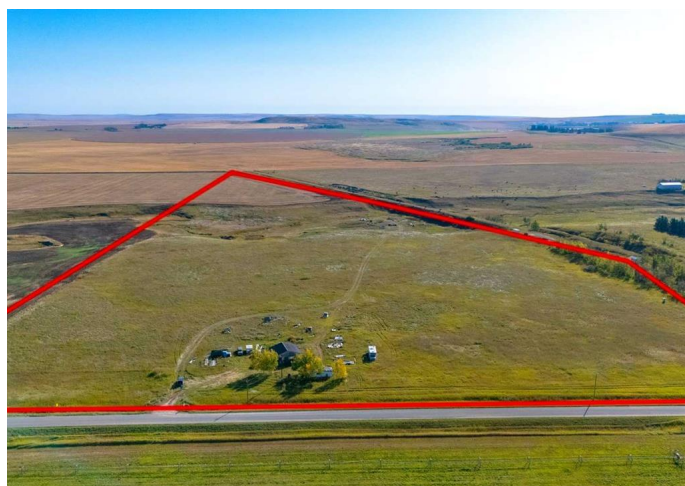
0 Bedroom, 0.00 Bathroom,
Land on 36.69 Acres

NONE, Rural Wheatland County, Alberta

Are you dreaming of wide-open spaces just outside the city? This 36-acre parcel in Wheatland County, located only about an hour east of Calgary near Rockyford, offers endless possibilities. Whether youâ€™re planning to build your dream home with plenty of room to spread out, or start your very own hobby farm, this property is a perfect fit. With convenient access from both Highway 21 and Highway 564, it combines peaceful rural living with easy connections to nearby communities. A natural stream runs through the land, adding to the beauty and offering a unique feature for future development or hobby farming. The property also features a gentle slope with multiple potential building sites to take advantage of the views and natural landscape. Donâ€™t miss this chance to create the lifestyle youâ€™ve been envisioning. Purchase price does not include GST.

Essential Information

MLS® #	A2258088
Price	\$399,900
Bathrooms	0.00
Acres	36.69
Type	Land
Sub-Type	Residential Land
Status	Active



Community Information

Address	254035 Range Road 241
Subdivision	NONE
City	Rural Wheatland County
County	Wheatland County
Province	Alberta
Postal Code	T0J 2R0

Additional Information

Date Listed	September 24th, 2025
Days on Market	2
Zoning	1

Listing Details

Listing Office	RE/MAX Real Estate (Mountain View)
----------------	------------------------------------

Data is supplied by Pillar 9â„¢ MLS® System. Pillar 9â„¢ is the owner of the copyright in its MLS® System. Data is deemed reliable but is not guaranteed accurate by Pillar 9â„¢. The trademarks MLS®, Multiple Listing Service® and the associated logos are owned by The Canadian Real Estate Association (CREA) and identify the quality of services provided by real estate professionals who are members of CREA. Used under license.