

# \$40 - 1112, 20 Dawson Wharf Mount, Chestermere

MLS® #A2258671

**\$40**

0 Bedroom, 0.00 Bathroom,  
Commercial on 0.00 Acres

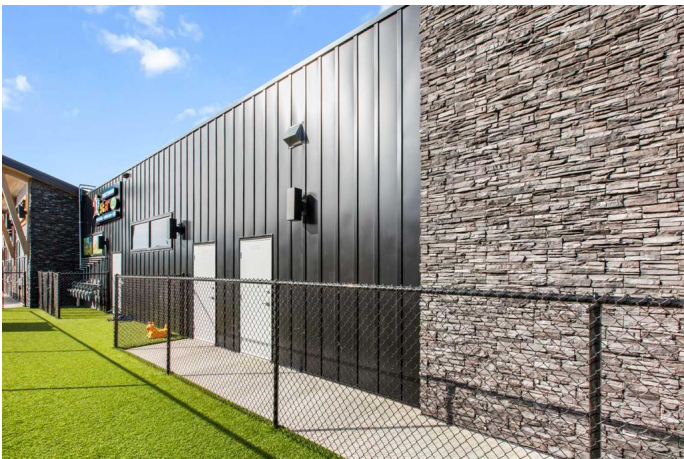
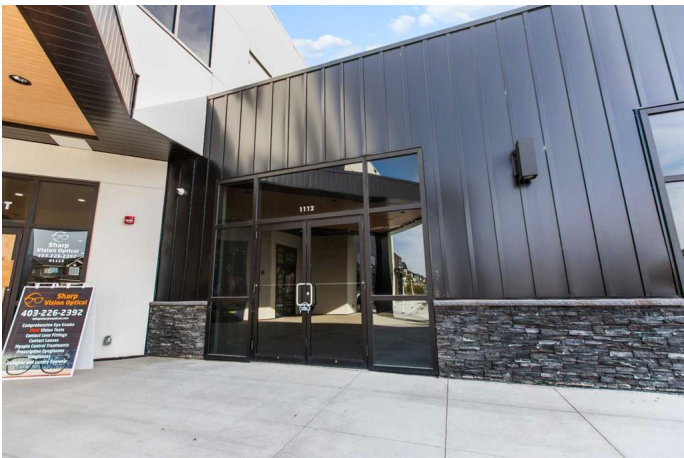
Dawson's Landing, Chestermere, Alberta

An exclusive and rare main floor retail unit of approximately 1,119 sq. ft. is now available for lease in one of Chestermere’s most sought-after plazas, located in the growing community of Dawson’s Landing. This unit offers excellent visibility, easy accessibility, and is surrounded by a dynamic mix of businesses and professional services including Chestermere Law, The Chai Bar, Sixty Wings, RE/MAX Keys, Jerry’s Smoke & Vape Shop, and more driving consistent foot traffic to the plaza. This versatile unit is an excellent fit for a wide range of businesses, including a doggy daycare, veterinary clinic, sandwich franchise, burrito franchise, shawarma, or other retail/professional services. With strong visibility, easy access, and a thriving surrounding community, the possibilities are endless. With its modern design, massive parking lot, and prime location within a residential and commercial corridor, this unit is an exceptional opportunity for a wide variety of retail or professional service uses!

Built in 2024

## Essential Information

MLS® #	A2258671
Price	\$40
Bathrooms	0.00
Acres	0.00
Year Built	2024



Type	Commercial
Sub-Type	Retail
Status	Active

### Community Information

Address	1112, 20 Dawson Wharf Mount
Subdivision	Dawson's Landing
City	Chestermere
County	Chestermere
Province	Alberta
Postal Code	T1X 2Z5

### Additional Information

Date Listed	September 26th, 2025
Days on Market	1

### Listing Details

Listing Office	Century 21 Bravo Realty
----------------	-------------------------

Data is supplied by Pillar 9â„¢ MLS® System. Pillar 9â„¢ is the owner of the copyright in its MLS® System. Data is deemed reliable but is not guaranteed accurate by Pillar 9â„¢. The trademarks MLS®, Multiple Listing Service® and the associated logos are owned by The Canadian Real Estate Association (CREA) and identify the quality of services provided by real estate professionals who are members of CREA. Used under license.