

\$500,000 - 50 Livingston Close, Lacombe

MLS® #A2258945

\$500,000

5 Bedroom, 3.00 Bathroom, 1,222 sqft
Residential on 0.13 Acres

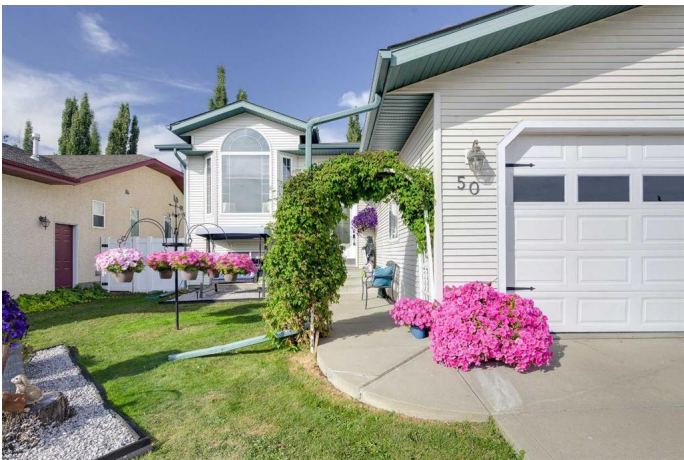
Lincoln Park, Lacombe, Alberta

Well-maintained home in Lacombe's Lincoln Park subdivision, located on a quiet close with alley access. Features include an attached heated garage, new vinyl fence with 14' opening, perfect for extra parking or yard access. A bright, airy main floor with updated lighting, freshly painted walls and ceiling (2024), pantry, and new stove (2024). Three bedrooms on the main, including a primary with 4-piece ensuite. Lower level offers new carpet, large rec room, big windows, two bedrooms, full bath with dual sinks, and laundry. Comfort is top of mind with in-floor heat, a new furnace, two new hot water tanks, and central A/C all installed in 2024. Enjoy the large yard with freshly stained deck, new shed, and updated landscaping. Move-in ready with modern upgrades throughout!

Built in 1999

Essential Information

| | |
|----------------|-------------|
| MLS® # | A2258945 |
| Price | \$500,000 |
| Bedrooms | 5 |
| Bathrooms | 3.00 |
| Full Baths | 3 |
| Square Footage | 1,222 |
| Acres | 0.13 |
| Year Built | 1999 |
| Type | Residential |



| | |
|----------|----------|
| Sub-Type | Detached |
| Style | Bi-Level |
| Status | Active |

Community Information

| | |
|-------------|---------------------|
| Address | 50 Livingston Close |
| Subdivision | Lincoln Park |
| City | Lacombe |
| County | Lacombe |
| Province | Alberta |
| Postal Code | T4L 2J3 |

Amenities

| | |
|----------------|---|
| Parking Spaces | 2 |
| Parking | Double Garage Attached, Driveway, Heated Garage, Off Street |
| # of Garages | 2 |

Interior

| | |
|-------------------|--|
| Interior Features | Central Vacuum, Double Vanity, High Ceilings, Pantry, Recessed Lighting, Vinyl Windows |
| Appliances | Dishwasher, Microwave Hood Fan, Refrigerator, Stove(s), Washer/Dryer |
| Heating | Forced Air |
| Cooling | Central Air |
| Has Basement | Yes |
| Basement | Finished, Full |

Exterior

| | |
|-------------------|--|
| Exterior Features | Awning(s), Private Yard, Storage |
| Lot Description | Back Lane, Back Yard, Cul-De-Sac, Landscaped, Level, Rectangular Lot |
| Roof | Asphalt Shingle |
| Construction | Vinyl Siding |
| Foundation | Poured Concrete |

Additional Information

| | |
|-------------|----------------------|
| Date Listed | September 22nd, 2025 |
| Zoning | R1 |

Listing Details

| | |
|----------------|-----------------------------------|
| Listing Office | Royal LePage Network Realty Corp. |
|----------------|-----------------------------------|

Data is supplied by Pillar 9â„¢ MLS® System. Pillar 9â„¢ is the owner of the copyright in its MLS® System. Data is deemed reliable but is not guaranteed accurate by Pillar 9â„¢. The trademarks MLS®, Multiple Listing Service® and the associated logos are owned by The Canadian Real Estate Association (CREA) and identify the quality of services provided by real estate professionals who are members of CREA. Used under license.