

\$20 - B, 5820 Highway 2a, Lacombe

MLS® #A2258965

\$20

0 Bedroom, 0.00 Bathroom,
Commercial on 0.00 Acres

NONE, Lacombe, Alberta

High traffic location with high visibility and exposure in a professional setting. The space features 5 offices, dedicated reception area with a client waiting room, 2 washrooms, full kitchen and staff eating area. Covered patio area for breaks. Plenty of parking. Large area that currently has 6 work cubicles that existing tenants might sell if new tenants are interested in. Currently being used as an accounting office.

There is also an option for an extra 900 sqft on the second floor if more room is needed.

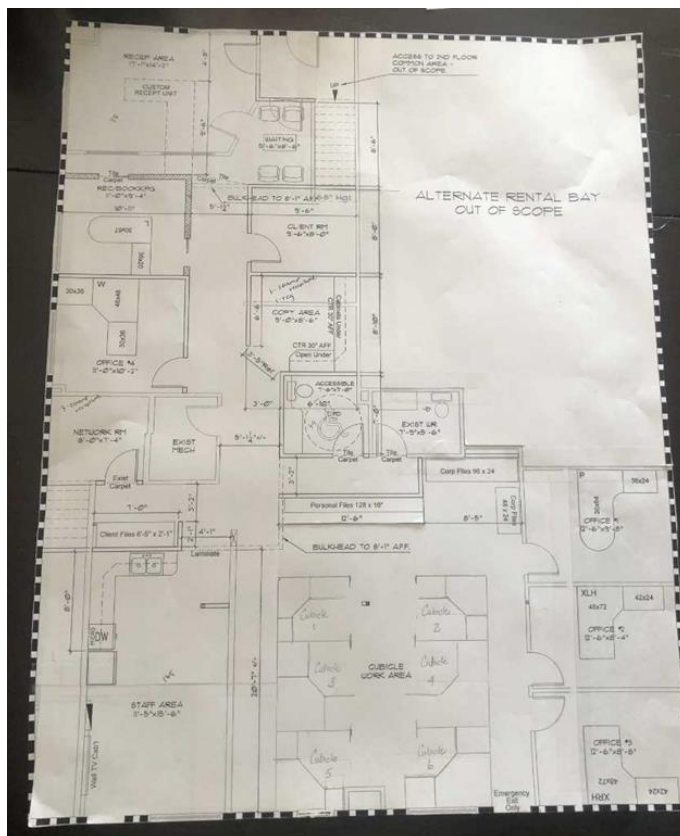
Built in 2011

Essential Information

MLS® #	A2258965
Price	\$20
Bathrooms	0.00
Acres	0.00
Year Built	2011
Type	Commercial
Sub-Type	Mixed Use
Status	Active

Community Information

Address	B, 5820 Highway 2a
Subdivision	NONE
City	Lacombe
County	Lacombe
Province	Alberta



Postal Code T4L 2G5

Additional Information

Date Listed September 23rd, 2025

Days on Market 3

Zoning C4

Listing Details

Listing Office Royal LePage Lifestyles Realty

Data is supplied by Pillar 9â„¢ MLS® System. Pillar 9â„¢ is the owner of the copyright in its MLS® System. Data is deemed reliable but is not guaranteed accurate by Pillar 9â„¢. The trademarks MLS®, Multiple Listing Service® and the associated logos are owned by The Canadian Real Estate Association (CREA) and identify the quality of services provided by real estate professionals who are members of CREA. Used under license.