

\$250,000 - 255037b Highway 21, Rural Wheatland County

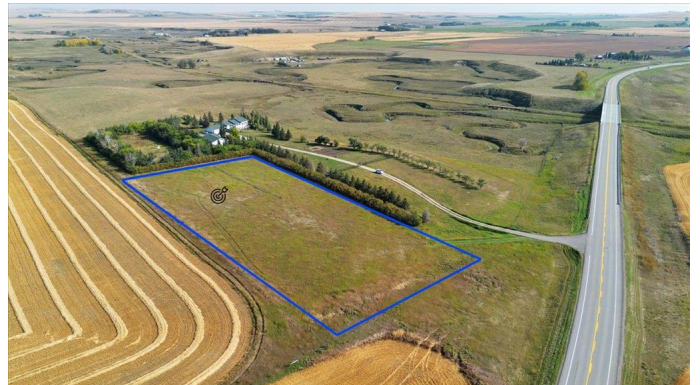
MLS® #A2259259

\$250,000

0 Bedroom, 0.00 Bathroom,
Land on 2.67 Acres

NONE, Rural Wheatland County, Alberta

Imagine waking up to wide-open skies and the quiet of the prairies, just 16 minutes from Strathmore and pavement all the way. This 2.67-acre land parcel in Wheatland County offers room to breathe, grow, and create the life youâ€™ve been dreaming about. With a gentle slope, this versatile land has mature trees on the south and east bordersâ€”perfect for privacy and shelter. Thereâ€™s a drilled well ready for your use, with power and natural gas nearby. With no building commitment, you can design at your own paceâ€”whether itâ€™s a cozy country home, manufactured home, or a barndominium and space for a few horses or goats. This is your chance to own a slice of Alberta prairie. By appointment only, do not enter onto the property.



Essential Information

MLS® #	A2259259
Price	\$250,000
Bathrooms	0.00
Acres	2.67
Type	Land
Sub-Type	Residential Land
Status	Active

Community Information

Address 255037b Highway 21

Subdivision	NONE
City	Rural Wheatland County
County	Wheatland County
Province	Alberta
Postal Code	T1P 1K7

Additional Information

Date Listed	September 22nd, 2025
Days on Market	5
Zoning	50

Listing Details

Listing Office	RE/MAX Key
----------------	------------

Data is supplied by Pillar 9â„¢ MLS® System. Pillar 9â„¢ is the owner of the copyright in its MLS® System. Data is deemed reliable but is not guaranteed accurate by Pillar 9â„¢. The trademarks MLS®, Multiple Listing Service® and the associated logos are owned by The Canadian Real Estate Association (CREA) and identify the quality of services provided by real estate professionals who are members of CREA. Used under license.