

\$28 - 408, 4979 Southlands Drive Se, Medicine Hat

MLS® #A2259336

\$28

0 Bedroom, 0.00 Bathroom,
Commercial on 0.00 Acres

Southland, Medicine Hat, Alberta

Welcome to Southlands Common! This versatile corner unit offers a bright layout with rear windows that bring in natural light, making it an excellent fit for retail, office or a professional business. With ample parking and a convenient location near residential and a variety of amenities, this space provides both accessibility and visibility for your business.

Built in 2024

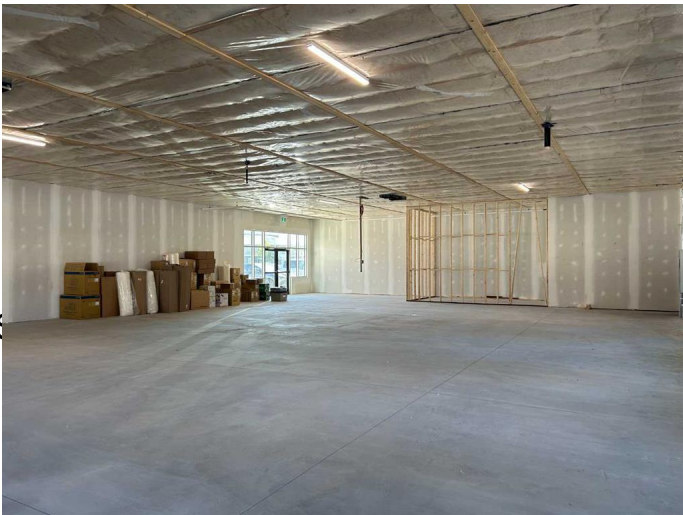
Essential Information

MLS® #	A2259336
Price	\$28
Bathrooms	0.00
Acres	0.00
Year Built	2024
Type	Commercial
Sub-Type	Retail
Status	Active

Community Information

Address	408, 4979 Southlands Drive S
Subdivision	Southland
City	Medicine Hat
County	Medicine Hat
Province	Alberta
Postal Code	T1B 0T8

Additional Information



Date Listed September 23rd, 2025

Days on Market 3

Listing Details

Listing Office RE/MAX MEDALTA REAL ESTATE

Data is supplied by Pillar 9â„¢ MLS® System. Pillar 9â„¢ is the owner of the copyright in its MLS® System. Data is deemed reliable but is not guaranteed accurate by Pillar 9â„¢. The trademarks MLS®, Multiple Listing Service® and the associated logos are owned by The Canadian Real Estate Association (CREA) and identify the quality of services provided by real estate professionals who are members of CREA. Used under license.