

\$28 - 410, 4979 Southlands Drive Se, Medicine Hat

MLS® #A2259345

\$28

0 Bedroom, 0.00 Bathroom,
Commercial on 0.00 Acres

Southland, Medicine Hat, Alberta

Welcome to Southlands Common! This bright end unit features large windows that flood the space with natural light, creating an inviting atmosphere - perfect for a cafe, restaurant or deli! With plenty of customer parking and a prime location close to residential neighborhoods and numerous amenities, this unit offers excellent visibility and convenience. Bring your business vision to life!

Built in 2024

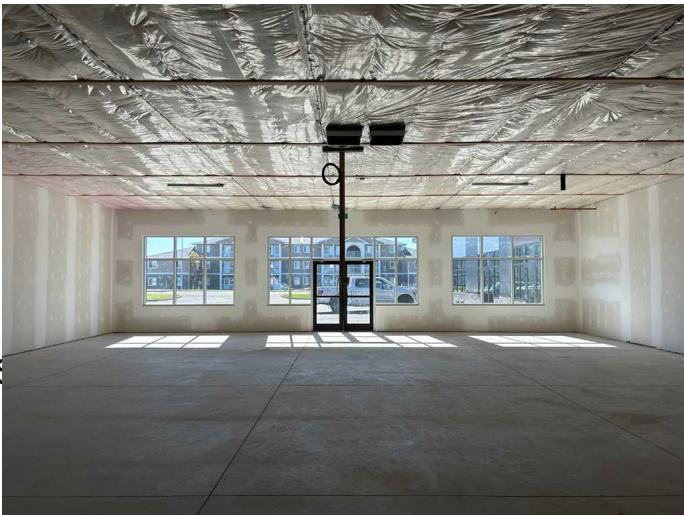
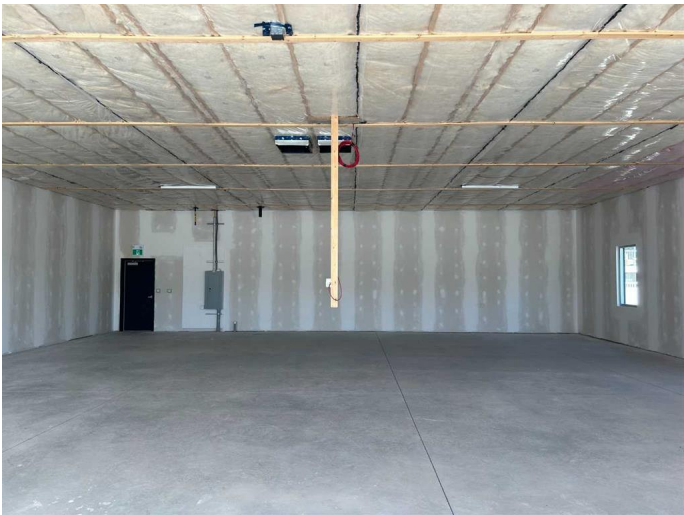
Essential Information

| | |
|------------|------------|
| MLS® # | A2259345 |
| Price | \$28 |
| Bathrooms | 0.00 |
| Acres | 0.00 |
| Year Built | 2024 |
| Type | Commercial |
| Sub-Type | Retail |
| Status | Active |

Community Information

| | |
|-------------|------------------------------|
| Address | 410, 4979 Southlands Drive S |
| Subdivision | Southland |
| City | Medicine Hat |
| County | Medicine Hat |
| Province | Alberta |
| Postal Code | T1B 0T8 |

Additional Information



Date Listed September 23rd, 2025

Days on Market 3

Listing Details

Listing Office RE/MAX MEDALTA REAL ESTATE

Data is supplied by Pillar 9â„¢ MLS® System. Pillar 9â„¢ is the owner of the copyright in its MLS® System. Data is deemed reliable but is not guaranteed accurate by Pillar 9â„¢. The trademarks MLS®, Multiple Listing Service® and the associated logos are owned by The Canadian Real Estate Association (CREA) and identify the quality of services provided by real estate professionals who are members of CREA. Used under license.