

\$629,900 - 14 Vista Close, Blackfalds

MLS® #A2260123

\$629,900

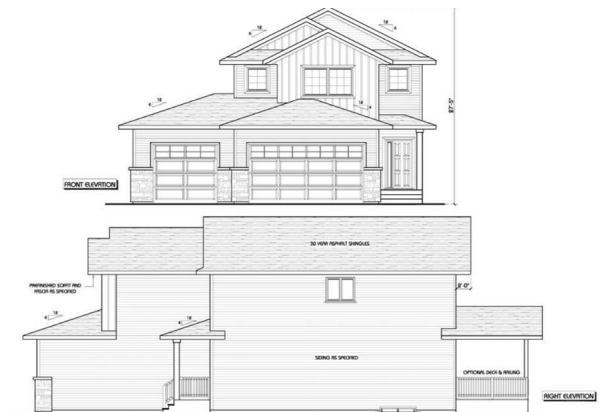
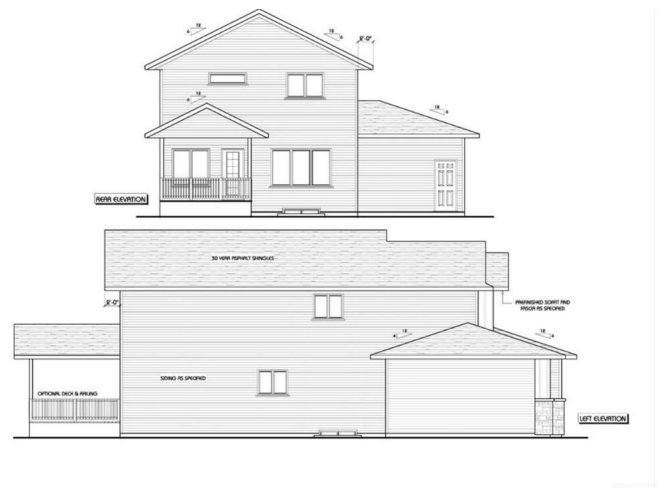
3 Bedroom, 3.00 Bathroom, 1,054 sqft

Residential on 0.13 Acres

Valley Ridge, Blackfalds, Alberta

A brand new home by Loewen Legacy Homes available February 1st in desirable Valley Ridge!! The curb appeal is accented by the front attached Triple car garage & the covered front composite porch. Deck facing south is great for sunsets, quartz countertops, Bonus room upstairs as well as den/office on the main level. Close to Schools, Playgrounds, Abbey Centre, The All Star bike Park Blackfalds community park, Garage World, the Iron Ridge Campus, shopping and a quick access to the highway and QEII.

Built in 2026



Essential Information

MLS® #	A2260123
Price	\$629,900
Bedrooms	3
Bathrooms	3.00
Full Baths	2
Half Baths	1
Square Footage	1,054
Acres	0.13
Year Built	2026
Type	Residential
Sub-Type	Detached
Style	2 Storey
Status	Active

Community Information

Address	14 Vista Close
Subdivision	Valley Ridge
City	Blackfalds
County	Lacombe County
Province	Alberta
Postal Code	T4M 0L3

Amenities

Parking Spaces	5
Parking	Triple Garage Attached
# of Garages	3

Interior

Interior Features	Closet Organizers, Open Floorplan, Pantry, Quartz Counters
Appliances	Built-In Oven, Microwave, Refrigerator
Heating	Forced Air
Cooling	None
Basement	None

Exterior

Exterior Features	None
Lot Description	Back Yard, Rectangular Lot
Roof	Asphalt Shingle
Construction	Vinyl Siding
Foundation	Poured Concrete

Additional Information

Date Listed	September 25th, 2025
Days on Market	1
Zoning	R1

Listing Details

Listing Office	Maxwell Real Estate Solutions Ltd.
----------------	------------------------------------

Data is supplied by Pillar 9â„¢ MLS® System. Pillar 9â„¢ is the owner of the copyright in its MLS® System. Data is deemed reliable but is not guaranteed accurate by Pillar 9â„¢. The trademarks MLS®, Multiple Listing Service® and the associated logos are owned by The Canadian Real Estate Association (CREA) and identify the quality of services provided by real estate professionals who are members of CREA. Used under license.