

\$59,900 - 63 Pine Lane Park, Lac La Biche

MLS® #A2260222

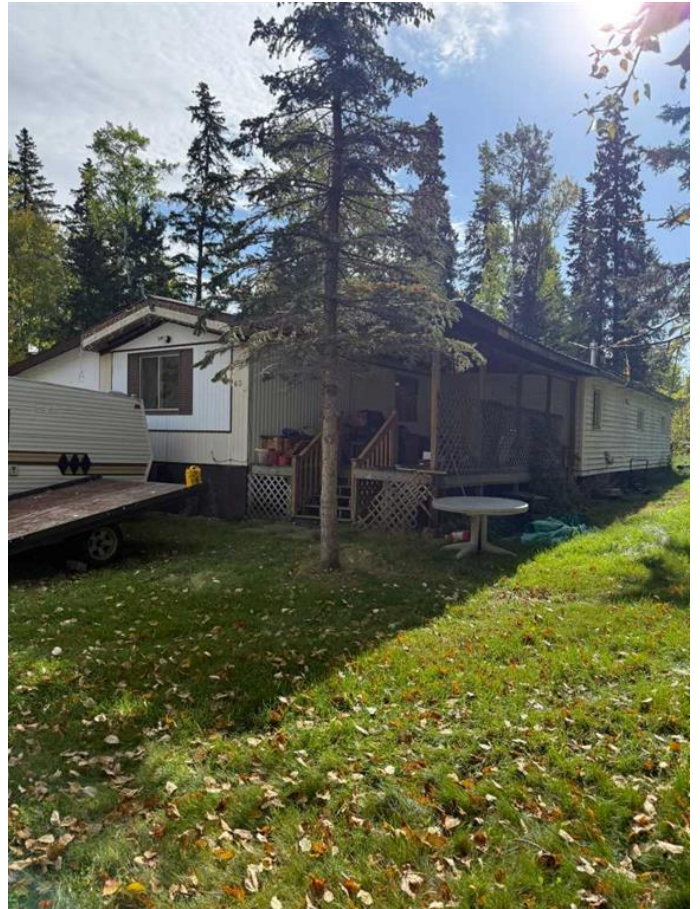
\$59,900

4 Bedroom, 1.00 Bathroom, 1,453 sqft

Mobile on 0.00 Acres

Lac La Biche, Lac La Biche, Alberta

This mobile home is located 10-15 minutes west of Lac La Biche. This home has a new High Efficiency "GREEN" Furnace, (roughly 3-4 Years old) that burns a lot less gas, and heats the home quickly. The gas bill on average is less than \$40/mth. New HWT, (same age as furnace). Water lines under the home had all new industrial heat tape done last year. The family room can be put back to a bedroom, so you can have 5 bedrooms. They have the door, it is just off. This oversized lot has mature trees to give it a nice privacy feel. Big shed in the back yard and plenty of room for your camper or RV, Being only minutes to Lac La Biche for all your grocery needs, and if you enjoy the outdoors, lakes close by. You are responsible for your own gas and electricity.



Essential Information

MLS® #	A2260222
Price	\$59,900
Bedrooms	4
Bathrooms	1.00
Full Baths	1
Square Footage	1,453
Acres	0.00
Type	Mobile
Sub-Type	Mobile
Style	Single Wide Mobile Home

Status Active

Community Information

Address 63 Pine Lane Park
Subdivision Lac La Biche
City Lac La Biche
County Lac La Biche County
Province Alberta
Postal Code T0A 2C2

Amenities

Parking Spaces 4
Parking Parking Pad, RV Access/Par

Interior

Appliances Freezer, Refrigerator, Stove(
Heating High Efficiency

Exterior

Roof Metal

Additional Information

Date Listed September 26th, 2025
Days on Market 1

Listing Details

Listing Office Royal LePage Network Realty C

Data is supplied by Pillar 9â„¢ MLSÂ® System. Pillar 9â„¢ is the owner of the copyright in its MLSÂ® System. Data is deemed reliable but is not guaranteed accurate by Pillar 9â„¢. The trademarks MLSÂ®, Multiple Listing ServiceÂ® and the associated logos are owned by The Canadian Real Estate Association (CREA) and identify the quality of services provided by real estate professionals who are members of CREA. Used under license.

