

\$685,000 - 230054 Range Road 255, Rural Wheatland County

MLS® #A2260363

\$685,000

2 Bedroom, 2.00 Bathroom, 1,054 sqft
Residential on 3.01 Acres

NONE, Rural Wheatland County, Alberta

This fully developed home sits on 3 acres with double attached garage, treed backyard. 2 bedrooms up with main floor laundry. Large family room down. Plenty of room to build a shop. Breezeway between garage & house makes a great mud room. Quick possession.

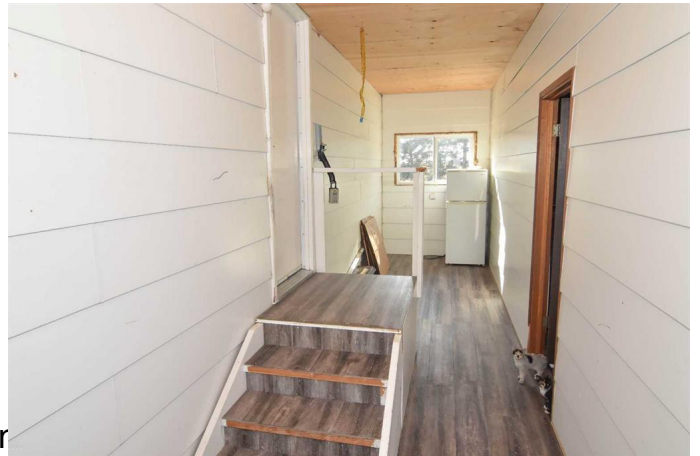
Built in 1978

Essential Information

MLS® #	A2260363
Price	\$685,000
Bedrooms	2
Bathrooms	2.00
Full Baths	2
Square Footage	1,054
Acres	3.01
Year Built	1978
Type	Residential
Sub-Type	Detached
Style	Acreage with Residence, Bur
Status	Active

Community Information

Address	230054 Range Road 255
Subdivision	NONE
City	Rural Wheatland County
County	Wheatland County



Province	Alberta
Postal Code	T1P 1K9

Amenities

Parking	Double Garage Attached
# of Garages	2

Interior

Interior Features	No Smoking Home, Storage, Sump Pump(s), Vinyl Windows
Appliances	Electric Stove, Microwave, Range Hood, Refrigerator, Washer/Dryer
Heating	Forced Air
Cooling	None
Has Basement	Yes
Basement	Full, Partially Finished

Exterior

Exterior Features	Private Yard
Lot Description	Back Yard, Front Yard, Lawn, Many Trees, No Neighbours Behind
Roof	Asphalt Shingle
Construction	Composite Siding, Wood Frame
Foundation	Poured Concrete

Additional Information

Date Listed	September 26th, 2025
Zoning	CR

Listing Details

Listing Office	KIC Realty
----------------	------------

Data is supplied by Pillar 9â„¢ MLS® System. Pillar 9â„¢ is the owner of the copyright in its MLS® System. Data is deemed reliable but is not guaranteed accurate by Pillar 9â„¢. The trademarks MLS®, Multiple Listing Service® and the associated logos are owned by The Canadian Real Estate Association (CREA) and identify the quality of services provided by real estate professionals who are members of CREA. Used under license.